

Teledata **one**

The Italian Touch!

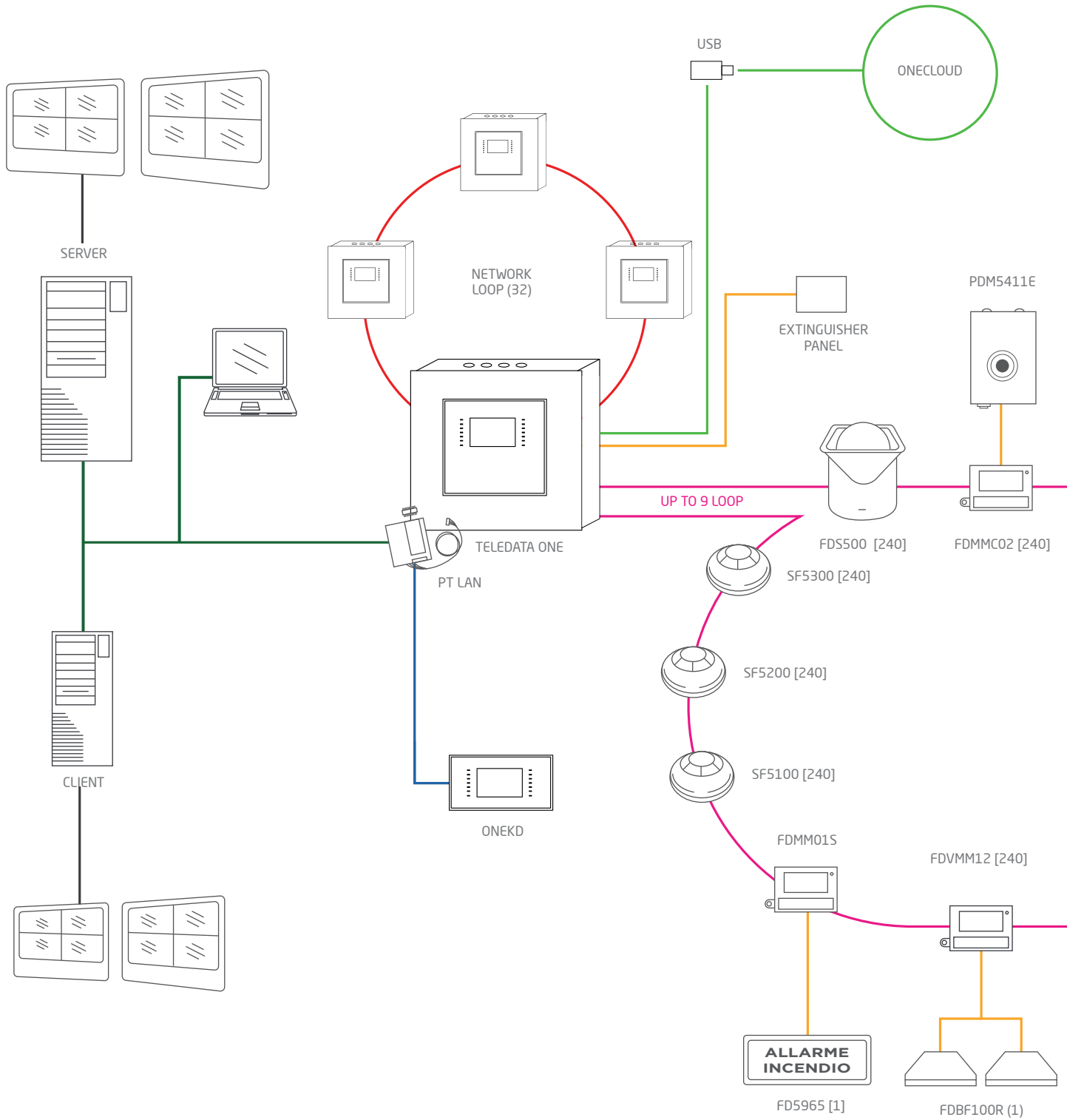


The only One you need

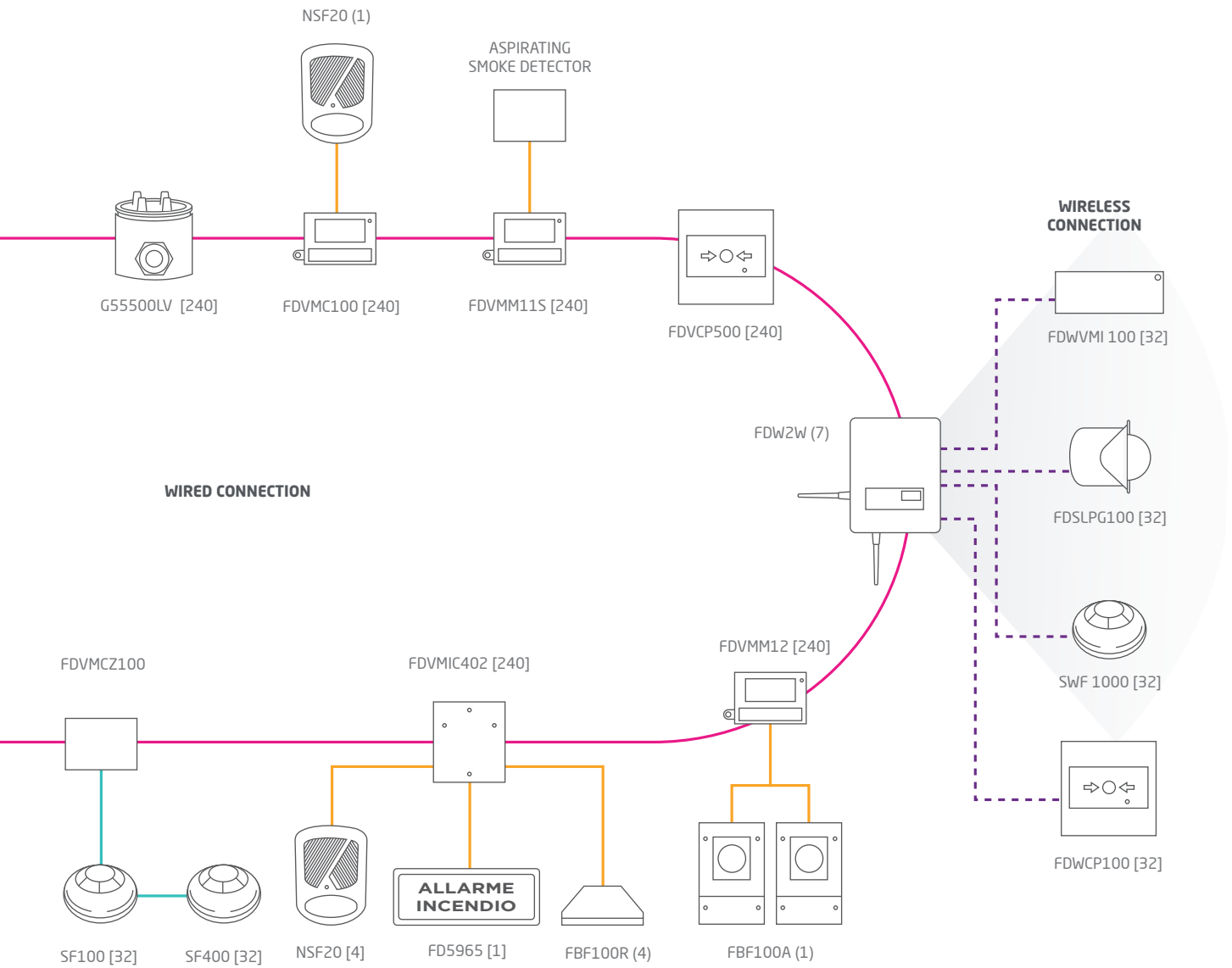
INDEX

Analogic fire alarm control panel	12	Extinguish Panel.....	38
Peripherals and accessories.....	14	Extinguish	39
Programming Software on Cloud.....	17	Atex Devices	40
Addressable detectors.....	18	Aspirating smoke detector - ASD	44
Addressed Modules.....	19	Thermal Cable.....	47
Addressable call points and sounder	21	Gas Detectors	48
Accessories for addressable detectors	23	Gas Control Unit - Pro Series.....	50
Accessories for addressable detectors	23	Gas Detectors - Pro Series	50
Wireless fire detection devices.....	25	Flame Detector	52
Integrated monitoring software.....	30	Spark detector	53
Centrali antincendio convenzionali	31	Sirens and bells.....	54
Radio module for conventional panels.....	32	Electromagnetic block.....	56
Conventional detectors	34	Adaptors and power supply panels.....	57
Alarm call point	35	Open frame adaptors.....	58
Acoustic optical display panels.....	35	Test ing accessories	59
Linear smoke beams detector	36	Cables.....	59
Anti flooding	37	Batteries	59

Sistemi **ANTINCENDIO**



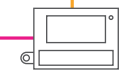
- **TCP/IP NETWORK**
(CAT5 cable)
- **RS485 LINE**
(Shielded, ant flame cable with 2 connectors for power supply and 2 connectors RS484 for signal)
- **SIGNAL**
(Shielded, ant flame cable with 2 connectors for power supply and 2 connectors RS484 for signal)
- **POWER SUPPLY AND SIGNAL**
(Shielded, ant flame cable with 2 connectors for signal and power supply)
- - - **WIRELESS**
(Radio connection with 870 MHz Frequency)
- **NETWORK LOOP**
(Cat 5 cable)



G55500LV [240]

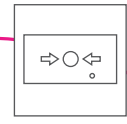
NSF20 (1)

ASPIRATING SMOKE DETECTOR



FDVMC100 [240]

FVMM11S [240]



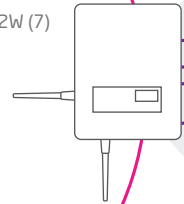
FDVCP500 [240]

WIRELESS CONNECTION



FDWVMI 100 [32]

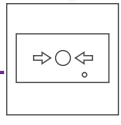
FDW2W (7)



FDSLPG100 [32]



SWF 1000 [32]



FDWCP100 [32]

FDVMCZ100



SF100 [32]

SF400 [32]



NSF20 [4]

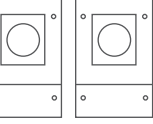
FDVMIC402 [240]



FD5965 [1]

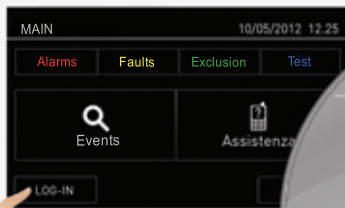


FBF100R (4)



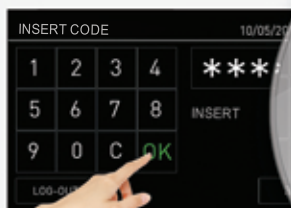
FBF100A (1)

Superior technology and ease of use



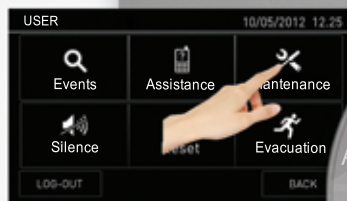
1. End User

For the first time in the fire industry, even the end-user can interact with a control panel! End-user can access to their own personal screen at any time, without a password, allowing them to see the events divided by: All , Alarms, Faults, Dates, Loop or by area. Or simply call assistance with a touch!



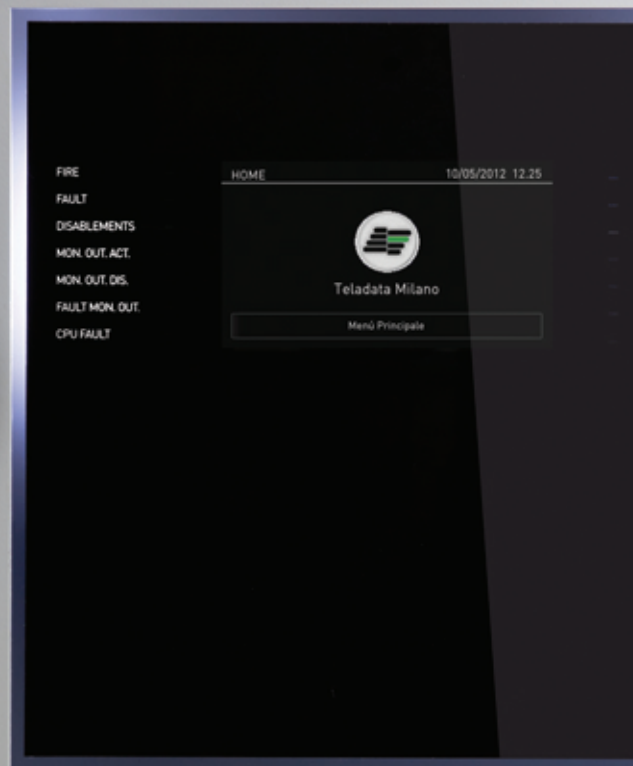
2. Log In

Once logged on the system, the end-user, maintenance technician or programmer will gain immediate access to his own user menu. Only the 4-6 keys specially designed for each user will appear on the touch screen! Everything is quick and easy: mistakes are virtually impossible! Finally a fire control panel that's easy-to-understand!



3. Operator Menu

Teledata one is a maintenance technician's dream. Traditional fire control panel force you to use conventional mini displays, often poorly back-lit, with endless menus, perhaps not even in your language, or require you to connect to a pc,



make this system truly UNIQUE!

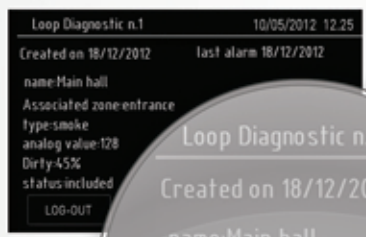
4. Diagnostic Map

Teledata One displays the status of the system in a single glance, thanks to its diagnostic map which provides full information: immediately visualizing detectors, input/output modules and all wireless devices market with a "W". The level of dust and consequent inefficiency of a detector is indicated with different colours.



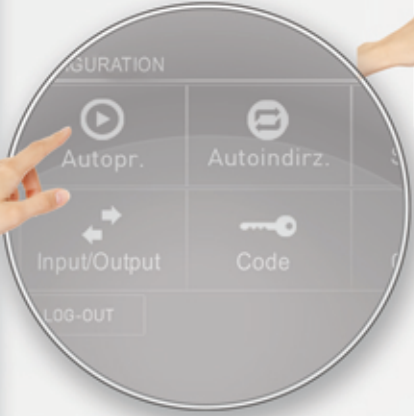
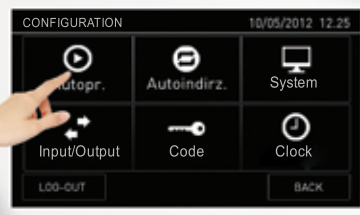
5. Detailed Information

By touching the icon of the device, detailed information will appear about the exact percentage of dust, making it easier to plan periodic maintenance. Since dusty detectors are no longer able to detect any smoke, you always need a complete maintenance tool for the entire system at your fingertips.



6. Configuration Menu

Teledata One is also the dream of every installer: it is autoaddressable, with no need for time-wasting dip-switches or conventional programming devices.



7. Autoprogramming

The control panel reads the entire field and automatically programs all the devices. Next, the diagnostic map displays everything that's been programmed by the control panel. It's so simple!



- POWER
- TEST
- SILENCED
- EXT. ACTIVATION
- EXT. RELEASE
- EXT. OUT SERV
- EXT. LOCKED

Completely touch screen and the new fire alarm system



Unique Design.

Its name is One, since it offers all the information and instructions you need on a single touch screen!
A unique Italian design with programmable side led.



Touch Interface.

It's made to be touched: the first certified fire panel fully touch!
A totally touch screen panel with easy use interface.

expandable to 9 loops, is made in Italy"



Custom.

Teledata One is available in: White, black , or in custom painted shades colours
A refined object of refined italian design, which can also feature your trademark, since it is completely customizable, even with:
White or tri-color backlighting LED.
Fully customizable for OEM, certificate, logo and color.



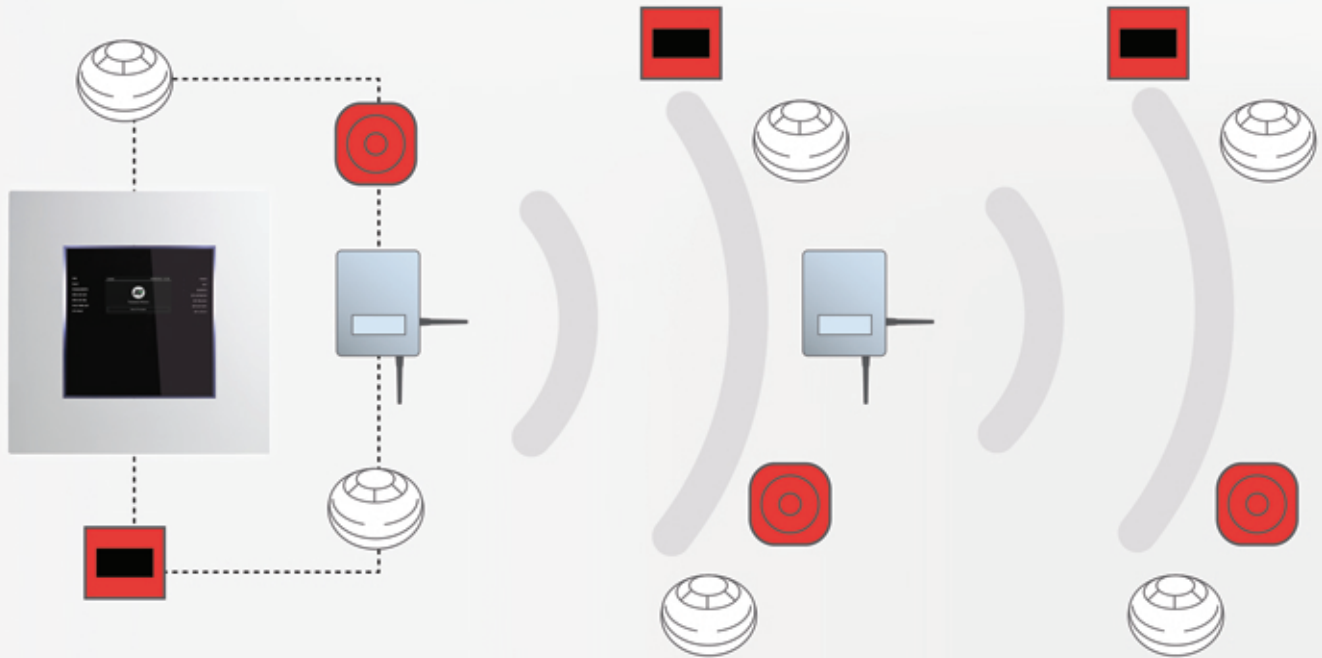
LANGUAGE			10/05/2012 12.25		
Italiano	Francais	Deutsch			
English	Iran	Siria			
LOG-OUT		SAVE	BACK		



All languages.

A superior quantity of characters and symbols. Up to 111 languages.

Safety & All in one!..



Wireless.

Hybrid solution for wired and wireless devices.

When combined with the extensive range of compatible industry leading control equipment, Teledata offers the most flexible wireless fire solution available today. Translator Modules are connected onto the control panel loop wiring, either on their own to form a fully wireless system, or mixed with wired field devices to form a Hybrid system. Each of these Translator Modules communicates with up to 128 field devices via a proven wireless protocol, processing the messages received from the field devices and transmitting information about themselves and the devices they support to the system's control equipment. All field devices have a wireless range of 150m in free air, but where greater distances are required the system is supported by a range of Expander and Router Modules which help

to propagate the radio signals. Multiple Translator Modules can be used on each control panel loop and each Translator Module can support multiple Expander Modules making it possible to configure systems of virtually any size and complexity. Where a non-addressable system or a system with an unsupported protocol is present, wireless detection devices can still be achieved in specific areas with the deployment of one Expander Module.

Simplicity

All for you!



Multi protocol.

Multi protocol devices and detectors.

FIRE SYSTEM



Auto addressing.

Auto addressing function with logical mapping position.



Extinguish module.

Extinguish module option.



Expandibility.

Connect up to 128 panels on a network loop, to manage massive systems with more than 250,000 devices.



Redundancy.

The only fully redundant control panel made in Italy! All the individual components, from the CPU, to the power unit and other parts, can be redundant, to protect people's lives better, well beyond ordinary fire-prevention standards.



> **TELEDATA ONE** 1 loop expandable to 9 addressable fire alarm control panel



TeledataOne, is the fire alarm control panel of the future, completely made in Italy. First alarm control panel with touch-screen technology and certified EN 54-2 and 4. The GUI interface is user friendly, you can program the central without a manual. The levels of access are three, are projected to facilitate the use to each type of OPERATOR (installer, Head of Security and End User) .TeledataOne is multiprotocol and it is available until 9 loops, each of they settable with protocol Argus or Apollo. With one central you can connect up 2160 devices, in fact each loop supports 240 devices. If you want to interface still more devices you can create a ring of TeledataOne through the One Ring, so your place will be even more secure.

TeledataOne allows to use wired devices and wireless device in the same system. TeledataOne records each alarm and fault, so they are visible into "historical events", where you can divide the historic by date , events , zones and loops.

The export from TeledataOne of diagnostics of devices, central configuration and historical events is very easy with a USB pendrive. TeledataOne also have a unique design , the mechanics are available in different colors , the background with 3 LED colors can be added or removed. Also, on request, Teledata gives you to customize the central inserting the logo of your company. TeledataOne want be so a international product, that it manages 111 languages and their alphabets. To increase any more the easy programmation of TeledataOne there is OneCloud, thanks it you can configure the central with a device connected to a Internet network(PC, smartphone, tablet...) comfortably, far from central panel, and import the configuration on your TeledataOne, so easy with a USB pendrive.



HARDWARE features

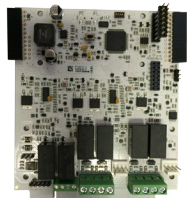
- Addressable fire alarm panel with 32-bit microprocessor
- LCD touchscreen display (480x272 TFT 4.3 “)
- Back light on/off and three settable colors
- 1 addressable loop, expandable up to 9 loops (with 4 One2) configurable as open or closed,
- Digital protocol .
- Frontal LEDs with three settable color: white , blue and green
- each loop supports 240 addressable devices
- Short-cut circuit protection .
- 14 front LED for events
- Silenceable and excludable signaling buzzer
- 1 monitored output for siren or dialer (24Vdc 1A)
- General Output dry contact 1A 30Vdc 120 Vac
- 1 general open collector output
- 1 RS 485 line for peripherals (maximum current value)
- 1 RS 232 and 1 micro USB for programming and remote management
- Ethernet card 10 Mbit / s (Optional PTLAN)
- 56 LED zone (option card ONE 56)
- 1 fire extinguishing canal (optional ONE EXT card)
- redundancy card (optional card ONE RDD)
- Ring Network Card between central (optional ONE RING tab)
- Maximum 14 remote control panels can be connected to the RS485 BUS max 800m distance (ONE KBD)
- With four additional One2 needed supplementary power supply (ONEPW)
- Two 12 V Battery; capacity 17Ah each.
- Automatic test of efficiency batteries and battery disconnection in case of deep discharge
- Auxiliary power output 24 Vdc 500mA with shortcut protection
- Dimensions: 410 x 410 x 120 mm
- Weight: 6,1Kg (without batteries)
- Power supply: 230Vac
- Current absorption: 300mA
- Maximum current external loads: 500mA
- Operating Temperature :0C°/ +50C°
- Maximum current on loop: 500mA

SOFTWARE features

- 240 addressable devices for one loop
- hybrid systems wired / radio
- 192 programmable zones .
- 192 logic functions
- more than 1000 events reported into archive
- Internal clock
- Auto programming analog devices on loop
- Auto addressing analog devices on loop*
- Mapping analog devices on the loop .
- Ring connection with other stations using a fault tolerant network
- Multilingual management
- Customizable with personal logo,
- Management of detectors and analog modules of different types :
 - Managed Thermal and optical detectors in the sema loop
 - Input modules
 - Output Modules
 - Buttons addressed
 - Analogue Addressable Sirens multiprotocol
- Colorful LED selectable
- Programmable locally or remotely by dedicated software
- Multi - Protocol Teledata and Apollo
- MODBUS TCP/IP/MODBUS RTU protocol over IP (TCP option card MCGTWMDB)
- Certified Product Standards EN54-2 and EN54-4
- CE Marking (EMC low-voltage directive)

Colori Custom



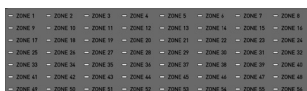


> ONE 2 Expansion card with 2 loops for Teledata One

With ONE2 you can extend the management capabilities of TeleData one. One card has 2 supplementary loops, both have same features of master panel. The mounting is internal into fire alarm panel and doesn't modify the design.

Technical Features

- 2 loops
- up to 4 One2 for one TeledataOne
- Certified device according to EN54-2
- Loop configurable as open or closed loop
- Maximum number of devices per loop : 240
- Internal mounting of the center by connector of the master board
- 2 programmable relay output of monitored alarm
- Multi - Protocol Teledata Apollo



> ONE 56 Panel led for alarms of zones

Panel led One56 is applicable below display of TeledataONE, without to modify form and design. Thanks to panel you can have a light signal of alarm of zones and will be possible individuate more fast the number of activate zone.

Technical Features

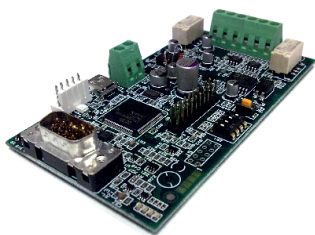
- number of visualizable zones 56
- Operating Temperature : -5 ° C / + 40 ° C
- Dimensions : 219x58mm
- Red LED Color
- Powered by TeledataOne



> ONE PW Supplementary power supply for full configuration of TeledataOne

Necessary if you will choose a particular configuration for TeledataONE, (for example with 4 ONE2).

- 100-240VAC Input - 1.2A
- 50/60 Hz
- output - 27V , 2.3A
- Operating Temperature : -5 ° C / + 40 ° C
- Dimensions : 180x61x349mm



> ONE RING card for ring networks between TeledataOne

With One Ring you can connect in a ring network up to 32 TeledataOne, so is possible to create a system that shares all informations of each single panel.

Technical Features

- CAN BUS Connection
- speed communication up to 50 Kbps
- High fault tolerant , able in the presence of network failure , to maintain the necessary information pass between the nodes .
- Compatible with central Olympia - Teledata One
- Prepared for mounting inside the central Olympia / Teledata One
- Range up to 1.2 km with a special cable
- Consumption 250mA max - 50mA nominal
- 12 Vdc power supply from the central Olympia
- 24 Vdc power supply from the central TeledataOne

> FDCANMONO Mono mode optical fibre converter with ST connector for Olynet card *on request

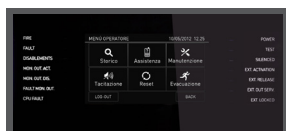
- Power supply: 12Vcc

> FDCANMULTI Multi mode optical fibre converter with ST connector for Olynet card *on request

- Power supply: 12Vcc

> ONE KBD Remote Touch screen panel with iron case for TeledataOne and One Mini

Same as to the TeledataOne the OneKBD is easy and intuitive to use. All functions can be reached with a touch according to the different levels of access. It offers the possibility of events and historical display .



Technical Features

- graphical touch screen display (480x272 TFT 4.3 ")
- 14 front LED
- 2 line RS 485 for the connection
- Operating Temperature :- 5°C / +40°C
- Power supply; 27.6vdc
- consumption : 90mA
- Talk Speed: 38400 bps
- Maximum number of ONEKBD that can be connected to a control center : 14
- Dimensions : 210x120x30 mm
- Weight : 1kg
- Level of protection : IP30

> PTLAN Ethernet interface for TeledataOne

This card is a serial TTL interface powered by TeledataOne and mounted internally



Technical Features

- Powered by central
- From 300 to 900 kbps
- Control signals : RTS , CTS , DTR , DCD
- Ethernet 10 Base - T
- RJ45 connector
- Operating Temperature : -10C ° to + 50 ° C °
- Dimensions : 45x90x28 m

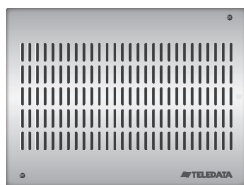
> MCGTWMDB Protocol converter for MODBUS protocol

Hardware features:

- Unit microprocessor controlled 133 MHz
- 32Mbytes Flash expandable to 64Mbytes
- 32Mbytes Ram expandable to 64Mbytes
- Embedded Operating System
- Network interface card Ethernet 10 100 Base T Integrated
- 1 RS232 serial line protocol for interfacing with central IEC 79/5 - 79/6
- Internal battery backup
- Power supply: 12Vdc
- Power consumption: 480 mA
- Operating Temperature: 0 ° -50 °
- Relative Humidity: 0% -95%
- Weight: 3,5Kg
- Dimensions: 208x152x65mm

FUNCTIONAL

- Protocol converter on MODBUS RTU over TCP / IP or Modbus TCP / IP by RS232 serial CEI 79/5 - 79/6
- Prepared for future expansion and customization according to specific projects.



> FDSMART400 3g dialer EN54 21 certified *Q3 2017



Technical Features

- 4G dialer with Touch screen integrated
- Multilanguage interface
- Available protocols Contact ID, SIA(1/3 livelli) e Fast format (scancom)
- SMS message system interface
- 4 Input and 4 relè outputs
- Certified EN54 21, EN50136-2, EN50131-1& EN50136-1 (grado 2 e 3)
- Power and consumption 9-28Vdc 151mA
- Working temperature -10C + 55 C
- Size 110x150 mm



> ONE MINI 1 loop addressable fire alarm



Caratteristiche HARDWARE

- Addressable 32-bit microprocessor panel with graphical touchscreen display (480 x 272 TFT 4.3 ")
- 1 addressable loop with digital protocol configurable as open or closed
- 240 addressable devices on loop
- Up to 14 remote control panels can be connected to the RS485 BUS max 800m distance (cod. Art. ONE KBD)
- Short circuit protection
- 14 Front LEDs
- 2 monitored output for siren or optical-acoustic signaling (24Vdc 1A)
- General clean contact output 1A 30Vdc 120 Vac
- 1 general fault output
- 1 RS 485 for peripherals
- 1 RS 232 / micro USB for programming and remote management.
- Ethernet card 10-100 Mbit / s (optional cod. Art. PTLAN)
- 16 LED zones
- Ring network adapter between panels (optional cod. Art. ONERING)
- Battery capacity: 2 x 7.2 Ah
- Efficiency test batteries and battery disconnection in case of deep discharge
- Operatin temperature from 0° to 50° degrees
- Auxiliary power output 24 Vdc 500mA with short protection
- Dimensions: 330 x 310 x 80 mm
- Power supply: 230Vac

Caratteristiche SOFTWARE

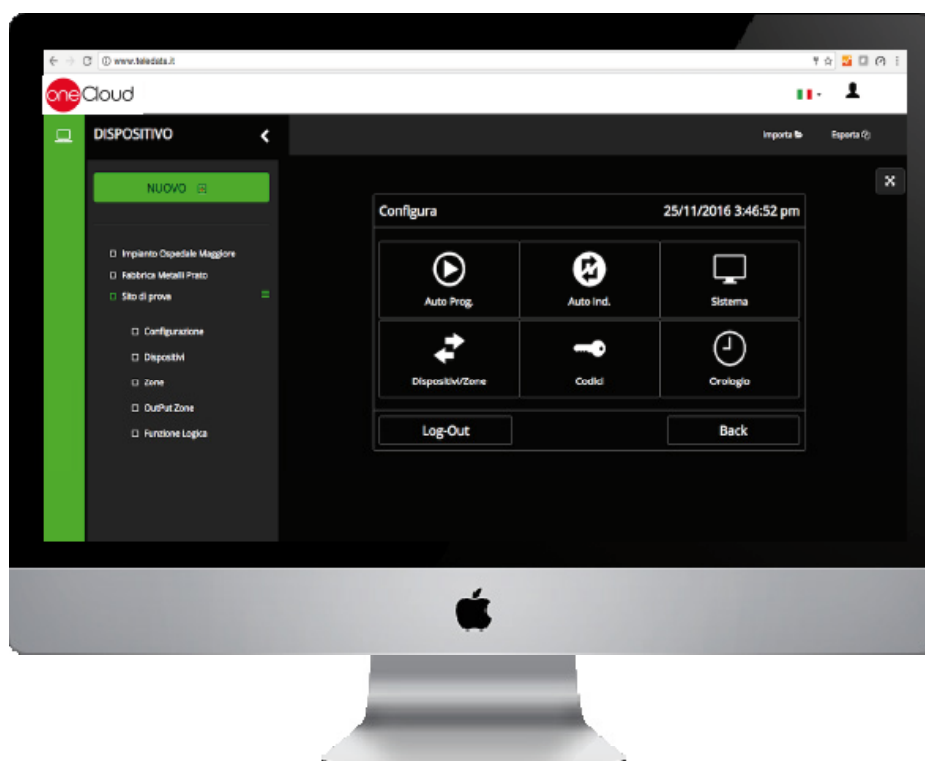
- Up to 240 addressable devices for the loop
- hybrid yarms / radio
- Division up to 192 areas
- 96 logic functions
- Store more than 1000 events
- Auto programming analog devices on loop
- Auto addressing analog devices on loop
- Mapping analog devices on loop
- Ring connecting with other central using a fault tolerant network
- Multilingual management
- Fully customizable with personal logo, Color
- Touch screen and side multi-color LED
- Management of detectors and analog modules of different type
 - thermal and optical detectors mixed
 - Input Modules
 - Output Modules
 - buttons addressed
 - Analog Addressable sirens multiprotocol
- Selectable colored LED
- TCP/IP Protocol MODBUS / MODBUS RTU over TCP IP (optional cod. Art. MCGTWMDB)
- Certified Product Standards EN54-2 and EN54-4

Available expansion and accessories for One Mini

- ONE RING
- ONEKBD
- PTLAN
- MCGTWMDB
- FDSMART400



> **ONE CLOUD** Network Software dedicated to programming the TeledataOne Central



www.teledata.it

By using OneCloud will be even faster and easier to program the configuration of your TeledataOne.

OneCloud has a virtually identical interface to TeledataOne, that is usable on any device connected to a Internet network . With this software you can control and modify the central planning everywhere. You can export and import the your personal configuration in TeledataOne with a USB pendrive.



> SF5100 Optical smoke detector addressed with digital communication protocol .



It analyses the conditions of air in the protected zone with immunity to false alarms . It fitted with integrated isolator. It has three different colors LEDs for differents events: alarm condition (red) , fault (yellow) and location (green)

- Type: Optical smoke detector
- Power supply : 10-40V
- consumption : 90 uA
- Low profile to match the base BS5000
- Made up of multicolored modern design plastic.
- Integrated function of self-adaptation to changing environmental conditions
- Option for remote LED
- Maximum remote LED power consumption : 6mA
- IP40 / IP42 with protection
- Operating Temperature : -30 ° C + 70 ° C
- Humidity max .: 95 % non-condensing
- Height : 54mm
- Diameter : 110mm
- Weight with the base : 130g
- Certificate No . 0832 - CPR - F1809 C1154b-(cl-1)-01
- Product promoted and available only out of europe

> SF5100E Optical smoke detector addressed with digital communication protocol .

Same features of SF5100, but without isolator and three different colors LEDs

- Certificate No.0832-CPR-F1806 e C1154e-(cl-1)-01. Product promoted and available only out of Europe

> SF5200 Multi criteria detector addressed with digital communication protocol .

Multi criteria detector addressed with digital communication protocol . It can sample the temperature and to analys the conditions of air in the protected zone with immunity to false alarms . It fitted with integrated isolator. It has three different colors LEDs for differents events: alarm condition (red) , fault (yellow) and location (green)

- type: smoke and heat detector
- Power supply : 10-40V
- consumption : 90 uA
- Low profile to match the base BS5000
- Made up of multicolored modern design plastic.
- Integrated function of self-adaptation to changing environmental conditions
- Possibility of piloting remote LED
- Maximum remote LED power consumption : 6mA
- IP40 / IP42 with protection
- Operating Temperature : -30 ° C + 70 ° C
- Humidity max .: 95 % non-condensing
- Height : 54mm
- Diameter : 110mm
- Weight with the base : 130g
- Certificate No.0832-CPR-F1810 e C1154c-(cl-1)-01
- Product promoted and available only out of europe

> SF5200E Multi criteria detector addressed with digital communication protocol

Same features of SF5200, but without isolator and three different colors LEDs

- Certificate No.0832-CPR-F1807 e C1154f-(cl-1)-01 Product promoted and available only out of Europe

> SF5300 Heat detector addressed with digital communication protocol .

It samples the temperature in the protected zone with immunity to false alarms . It fitted with integrated isolator. It has three different colors LEDs for differents events: alarm condition (red) , fault (yellow) and location (green)

- Type: Heat detector
- Operating at 58 ° C as of rise
- Operation as a heat at 78 ° C temperature
- Programmable for operation at 58 ° C or 78 ° C
- Power supply : 10-40V
- consumption : 90 uA
- Low profile to match the base BS5000
- Made up of multicolored modern design plastic.
- Integrated function of self-adaptation to changing environmental conditions
- Possibility of piloting remote LED
- Maximum remote LED power consumption : 6mA
- IP40 / IP42 with protection
- Operating Temperature : -30 ° C + 70 ° C
- Humidity max .: 95 % non-condensing
- Height : 54mm
- Diameter : 110mm
- Weight with the base : 130g
- Certificate No.0832-CPR-F1811 e C1154a-(cl-1)-01
- Product promoted and available only out of europe

> SF5300E Heat detector addressed with digital communication protocol .

Same features of SF35000, but without isolator and three different colors LEDs

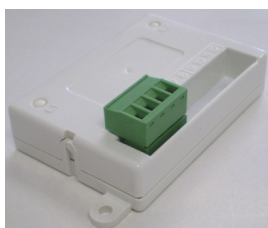
- Certificate No.0832-CPR-F1808 e C1154d-(cl-1)-01 Product promoted and available only out of Europe



> **BS5000** standard base

In ABS material with modern design

- Diameter : 110 mm
- Height : 15 mm
- Weight : 30,6 g
- Operating temperature : -30°C + 70°C
- Operating humidity (relative) : 95 % Without Condensation
- Output for remote indicator
- * Product promoted and available only out of Europe



> **FDL500** Isolator module

Isolator module to be used with adressable deviceenti.

- Maximum number of device can be placed between 2 isolaters is 31
- Loop tension from 15 V to 40 V
- Power consumption 90 μ A at 24 V
- Working temperature: -30 °C to + 70 °C
- Umidity: from 5 % a 85 %
- Dimensions: 75 x 52 x 28 mm
- Weight: 40 gr.
- * Product promoted and available only out of Europe



> **FDWP100** Rubber protection for basic BS100 to increase IP rating IP42 a sensor

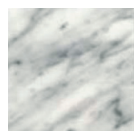
Rubber protection for basic BS100 to increase IP rating



> **SF 5XX0 COLOR XX** Different color for custom detector **on request*

According to customer specifications the detectors are available with different colors and motives. These solutions have been designed to manage installations where the appearance has an important role.

MARMO



CARRARA 11



BLACK 15

LEGNO



CILIEGIO 23

METALLO



ORO 31



ALLUMINIO 32



Addressed Mini-modules:

Thanks mini-modules you can interface to the loop various types of sensors (with input mini-module) or activate (with output mini-module) any type of output such as sirens , Audio/visual fire alarm device , electromagnets for fire doors , etc.



> **FDMM10** Monitored input Mini-Module

- Certificate No. KM658891. Product promoted and available only out of Europe

> **FDMM02** Output Mini-Module free switch

- Certificate No. KM658891. Product promoted and available only out of Europe
- Maximum 2A @30V

> **FDMM01S** Monitored output Mini-Module

- Certificate No. KM658891. Product promoted and available only out of Europe
- Maximum 2A @30V

> **FDMM12** Monitored input Mini-Module and free switch output

- Certificate No. KM658891. Product promoted and available only out of Europe

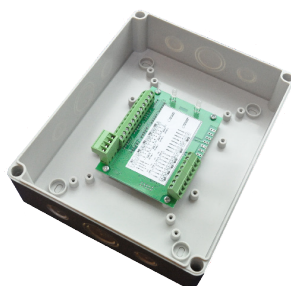
> **FDMM11S** Monitored input output Mini-Module

- Certificate No. KM658891. Product promoted and available only out of Europe
- Maximum 2A @30V

- Power supply: 10-40V
- consumption : 120 uA
- LED Current consumption : 6 mA (24V line)
- integrated isolator
- Relay Output : 30V 2A
- Operating Temperature : -30 ° C / 70 ° C
- Humidity max .: 95 % non-condensing
- Maximum cable cross-section 2.5 mm²
- Dimensions : 75X52X30 mm
- Weight : 180g

Addressed Modules

Thanks modules you can interface to the loop various types of sensors (with input module) or activate (with output module) any type of output such as sirens , Audio/visual fire alarm device , electromagnets for fire doors , etc.



> **FDXMM11S** Monitored Input and Output module

- Power supply : 10-40V
- Current consumption : 120 uA
- LED Current consumption : 6 mA (24V line)
- integrated isolator
- Relay Output : 30V 2A
- Operating Temperature : -30C ° 70
- Humidity max .: 95 % non-condensing
- Dimensions : 87X87X32 mm
- Max . Cable section 2.5 mm²
- Weight : 180g
- Product promoted and available only out of Europe

> **FDMC602** 6 input 2 output module

- Power supply 15-40v power
- Current consumption I = 500uA
- Integrated isolator
- Relay Output : 30V 2A
- Operating temperature : -30C ° +70C°
- Humidity max .: 95 % non-condensing
- Size 210x170x65
- Max . Cable section 2.5 mm²
- weight 470g
- Product promoted and available only out of Europe

> **FDMC404** 4 input and 4 output module

Same feautres of FDMC602 but with 4 inputs and 4 outputs. Available only out of Europe

> **FDMM422S** 4 input 2 output 2 monitored output module

*on demand

Same feautres of FFDMC602 but with 4 inputs and 2+2 outputs. Available only out of Europe



Modules addressed suitable on DIN rail routed to interface any devices on the loop



- > **FDVMDI100** Wireless input Mini-module *on request
- > **FDVMDC100** Output monitored Mini-module *on request
- > **FDVMDC120** Wireless output Mini-module *on request
- > **FDVMDIC100** Monitored Wireless input-output Mini-module *on request
- > **FDVMDIC120** Wireless input-output Mini-module *on request

- Equipped with double color LED
- Equipped with dual battery with power reserve indicator
- Maximum communication distance with FDW2W/FDWE100 form : 200m
- Operating Frequency 868MHz
- Modulation Type : FSK
- operating frequency channels: 7
- Primary battery : CR123A
- Time battery duration: 3 – 5 years
- Secondary battery : CR2032A
- Tamper
- Output power 5dBm (3mW)
- IP 65
- operating Humidity 95 % RH
- Operating Temperature : -30C ° to + 55 ° C

> **FDVCP500** Addressable and restorable fire alarm call-point .

The activation is indicated by a red LED and a broken glass effect . The button can be restored by a key included in the device .



- Power supply : 10-40V
- Current consumption : 70 uA
- LED Current consumption : 6 mA (24V line)
- Available in Red, Blue , Green , White and Yellow
- integrated isolator
- 3-color LED
- Accessory for recessed included
- Operating Temperature : -20 ° C + 65 ° C
- Maximum humidity : 95 % non-condensing
- Dimensions : 87x87x23 mm
- Max . Cable section 2,5 mm²
- Certificate No.0832-CPR-F1819 e No1154h-(cl-1)-01
- Product promoted and available only out of Europe

> **FDVCP500IP67** Addressable and restorable fire alarm call-point, with certificated weathering resistance.

The activation is indicated by a red LED and a broken glass effect . The button can be restored by a key included in the device.



- Power supply : 15 to 40 Vdc
- Power consumption : 6 mA is lit
- Average power consumption 70 uA
- Color: red
- Material: ABS
- integrated isolator
- Addressable
- Operating temperature : -20 / + 65C °
- IP 67
- Max . Cable section 2,5 mm²
- Dimensions 119x128x62 mm
- * Product promoted and available only out of Europe



> **FDALWSMOD** Addressable Module for FDCWS100 and FDCWS100AV sounders



- Power supply voltage range: 18Vdc-40Vdc
- Activated current load:
 - (High Vol. Inc. Sounder):5-8 mA at 24 Vdc
 - (High Vol. Inc. Sounder):Beacon 11-25mA at 24 Vdc
- Operating temperature range: -25°C to +70°C
- Unit weight (inc Back box): 290g
- Max tolerated humidity: 85% RH
- Compatible Sounder Units: FDCWS100 & FDCWS100-AV
- BS EN 54-18:2005: Input/Output devices
- BS EN54-17:2005: Short Circuit Isolators

> **FDS500** Addressable loop powered siren



Volume must be setted on the siren. Sync with sirens group is available

- Plastic red box
- Insulator circuit on board
- Power voltage: 19-30Vdc (per EN 54-3)
- current : 70 QA
- Current in alarm stae: 5-7mA (24V- line)
- soun level: 80 - 100dB
- Max delay to start: 2 sec
- IP Grade: IP21C
- Max. cable section 2.5 mm²
- Operating temperature: -10°C /+55°C
- Max umidity.: 85% 85 % RH (non-condensing)
- Dimensioni: 110x110x95 mm
- Peso: 210g
- Certificate No.CD1154g-(cl-1)-91
- Product promoted and available only out of Europe

> **FDCWS100AV** Sounder with flash en 54 3 and 23



Conventional sounder for wall with flash , modular and flexible design , easy to install , ability to silence the siren for use only flashing , warning capacity two-stage

- Addressable or wireless with the optional module FDALWSMOD or FDSGWSMOD
- Power supply 18Vdc / 40Vdc
- Load current 11-25mA to 24 Vdc
- Acoustic frequency range 400-2900 Hz
- Maximum acoustic output 100dB (A) @ 1m
- 32 tones
- Visual alarm frequency 0.5 Hz or 1 Hz
- Operating temperatures -25 ° C to + 70 ° C
- Maximum humidity tolerated 95 % RH
- Weight (in back box) 290g
- Waterproof
- IP category IP65

> **FDVFI100** remote indicator addressed for detectors to false ceiling or under the floor



- Power supply: 18-40 Vdc
- Current consumption in standby: 50 uA at 24 Vdc
- activated current consumption: 5,4 mA at 24 Vdc
- Cable Sections applicable to terminals : 0,5 - 2,5 mm²
- Operating Temperature : -30 - +70 ° C
- Size 80x80x27
- Maximum humidity : 85 % RH non condensing
- Degree of protection : IP 42



> **FDVMCZ500** Conventional zone module *on request

The conventional zone module allows the interfacing between conventional fire detectors and an analogue loop

- Power supply 18VDC - 40VDC
- Stand by current absorption 500 uA
- Average consumption : 120 mA
- integrated isolator
- Operating Temperature : -10 ° C + 55 ° C
- Compatible Wire Gauge 0.5 - 2.5 mm²
- Maximum humidity tolerated 85 % RH (non-condensing)
- Dimensions 130x93x58 mm
- Weight 190g
- IP 54
- Product promoted and available only out of Europe



> **FD500SD 40200** - Low Profile Loop Powered Sounder Base

- Compliant to EN54-3
- Low current as low as 0.8 mA
- World's slimmest Sounder Base
- Powered from the loop
- Individually controlled
- Does not consume any address
- Up to 240 Sounder Base Sensor on a single loop



> **FDVBS100/32** Universal siren with 32 tones for thermal and smoke detectors

- Activation associated to output remote of detector
- Maximum Power Consumption : 9.5 mA
- Maximum volume : 94 dBA
- Frequency of tones : 440 Hz to 2900 Hz
- Temperature range : -20 ° C - 70C °
- Humidity : 5 to 95 % RH



> **FDVBLS100/32** Addressable 32 tone siren for fire detectors

- Occupies a different address programmable independently
- Voltage range: 15- 40 V Typ 24 V
- Stand by current: 70 uA
- Max volume: 94 dBA
- 32 tone range: da 440 Hz a 2900 Hz
- Type of tone: programmable
- Temp range: -30 C° - 70C°
- Humidity range: da 5 a 95 % RH
- IP rating: 21C



> **FDVBS100-AV/32** 32 tone siren with flashing light for fire detectors

- Voltage range: 15- 40 V
- Max current: 12 mA
- Max volume : 94 dBA
- 32 tone range: da 440 Hz a 2900 Hz
- Type of tone: programmable
- Flash rate: 1Hz
- Temp. range: -20 C° - 70C°
- Humidity range: da 5 a 95 % RH



> FDVPU1000 Programming unit

The FDVPU1000 Programming Unit allows to Program and display on the screen, the various stored parameters In Analog Devices Fire .



The programming unit can be used , for example , for :

- Read and set an analog address of a device ,
- Read analog values and values of “ dirty”
- Enable or disable the input or output channels on a multi - module device .
- Read the firmware version of a device .

Technical specifications:

- Battery : 6LR61 type , 9 V
- Temperature range : -30 ° C to + 70 ° C
- Maximum humidity : 95 % RH (non-condensing)
- Weight : 200 gr .

> FDVLD100 Line driver

FDVLD100 With line driver you can interface a wired loop to PC and analyze it.



- Power Supply : 24 VDC - 1 A
- External voltage range power : 20 to 40 Vdc
- Voltage range of loop : 18 to 38 VDC
- the external supply voltage range suggested : 24 to 29 VDC
- Suggested voltage range of loop : 22 to 27 VDC
- Minimum voltage on loop to ensure the LED power : 18 VDC
- Maximum consumption by loop : 500 mA
- Maximum consumption of the loop when that is limited : 50 mA
- Connection to PC : RS232 or RS232 via USB adapter
- Temperature range : -30 ° C / + 70 ° C (non-condensing)
- Humidity : 95 % (non-condensing)
- Dimensions : 135 x 125 x 55 mm
- Weight : 370 g

> BOX500T Smoke detector housing for duct installation

- Material of container: thermoplastic
- Two PVC probes for detection of smoke



> BOX1000 Professional smoke detector housing for duct installation

- Adaptor for duct installation
- Filter for dusty environment
- Suitable for conventional or Intelligent fire system
- Suitable with BOXTB06 (pipe 60 cm) and BOXBRK (mounting bracket for insulated or circular ducts)

> **FDW2W** Addressable wireless transceiver and protocol converter

The device is able receive and convert from radio signal to Teledata protocol and vice versa. Thanks to FD2W you can add modules and detectors to loop, without to use wire, thanks to wireless technology. The device is able to address wireless devices.



- Maximum number of wireless devices: 32 (with up to 16 output type modules)
- Maximum number of expanders connected: 7
- Communication to devices thanks to wireless technology
- Transmission range 200 meters free space and 600 meters with expander
- Programmable to query the devices from 12 seconds to 2 min.
- Programmable with a PC
- Powered by the central loop, 18V -40V
- Typical current 20mA Load
- Operating Frequency: 868.15-869.85 MHz

- Output power 5dBm (3mW)
- Modulation Type: FSK
- Radio Poll Interval: 12 sec. to 12 min.
- Number of channels: 7
- Operating temperature: -30 to +50 ° C
- Humidity: from 5% to 90%
- IP 51C
- Dimensions without antenna mm 120x160x51
- antennas Number: 2
- antenna size 74 mm
- Weight 300g



> **FDWE100** Expander radio

- Power supply: 9-30 v
- Consumption : 15 mA at 24 Vdc and 30 mA at 12 Vdc
- High noise immunity
- Output power 5dBm (3mW)
- Manages up to 32 device (detectors and modules)
- Transmission range: 600m free space
- Maximum distance with FDW2W or FDWE100 form : 600m
- Operating frequency : 868 MHz
- Programming by pc
- Number of channels : 7
- IP 51C
- Operating temperature : -30 to +50 ° C
- Humidity : from 5 % to 90 %
- Dimensions without antenna mm 120x160x50
- antennas Number : 2
- antenna size 70 mm
- Weight 300g



> SWF1000 Wireless Smoke detector

- Certificated n. 0832 – CPD – 1069
- multicolored modern design made of plastic.
- Self-adaptation to changing environmental conditions
- two-way communication protocol
- Tamper
- Equipped with dual battery with power reserve indicator
- Primary battery : CR123A
- Time battery duration: 3 – 5 years
- Secondary battery : CR2032A
- Operating frequency : 868 MHz
- operating frequency channels: 7
- Output power 5dBm (3mW)
- Modulation Type : FSK
- Maximum communication distance with FDW2W/ FDWE100 form : 200m
- Operating frequency : 868 MHz
- Operating temperature : -10 to +55 ° C
- Humidity : 95 % RH
- IP40 protection class
- Dimensions: 110x65 mm
- Weight 130g
- Tamper signaling
- Certified to EN 54-7 EN 54-25

SWF3500 Wireless heat detector

- Certificated n. 0832 – CPD – 1068
- threshold alarm temperature: 58 ° C
- Certified to EN 54-5 EN 54-25

SWF2000 Wireless multi-criteria detector

- Certificated n. 0832 – CPD – 1070
- threshold alarm temperature: 58 ° C
- Certified to EN 54-5 EN54-7 EN 54-25

> FDWVMI100 Wireless input mini module



- Fitted with 2 two-colour LEDs
- Supplied with dual battery with low battery indication
- Primary battery: CR123A
- Secondary battery: CR2032A
- Relay output: 30Vdc 2A
- Tamper protection
- Operating temperature: -30C°+70°C
- Max humidity: 95% with no condensation
- Weight: 200g

> FDWMCB100 Wireless out put relay module



- High immunity to interference
- Maximum communication distance with FDW2W/ FDWE100 form : 200m
- Equipped with dual battery with power reserve indicator
- Operating frequency : 868 MHz
- Modulation Type : FSK
- operating frequency channels: 7
- Primary battery : CR123A
- Time battery duration: 3 – 5 years
- Secondary battery : CR123A
- IP 65
- 1 relay output : 30 Vdc , 2A , 60 W
- Output 12 / 24VDC : 30mA / 15mA
- wire diameter to clamps 0.5 - 2.5 mm2
- operating Humidity 95 % RH
- Operating Temperature : -30C ° to + 55 ° C



> **FDWCP100** Wireless addressed Call point, color Red

- Equipped with dual battery with power reserve indicator in operation
- Maximum communication distance with FDW2W/ FDWE100 form : 200m
- Primary battery : CR123A
- Time battery duration: 3 - 5 years
- Secondary battery : CR2032A
- Operating frequency : 868 MHz
- Modulation Type : FSK
- operating frequency channels: 7
- Output power 5dBm (3mW)
- Tamper
- Operating Temperature : -10 ° C + 55 ° C
- Material: ABS
- Dimensions : 86x86x59 mm
- Weight 186 g (without batteries)

> **FDSGWSMOD** Wireless module for FDCWS100 and FDCWS100AV sounders



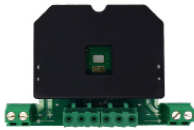
- Operating frequency range: 868.15 Mhz-869.85Mhz
- Max radiated power: 5dBm(3mW)
- Radio signal modulation type: FSK
- Operating frequency channels: 7
- Communication range with the translator or the expander: < 150m (in spazio aperto)
- Primary and secondary power cell: CR123A (3 V & 1.2 Ah)
- Primary and secondary power cell lifespan: 5 anni/ 2 mesi
- BS EN 54-18:2005: Dispositivi Input/Output
- BS EN54-25:2008: Componenti che utilizzano collegamenti radio e requisiti di sistema

> **FDCWS100** Sounder ip65 en 54 3



Conventional sounder wall mounting modular and flexible design , easy to install

- Addressable or wireless with the optional module FDALWSMOD or FDSGWSMOD
- Power supply voltage range 18Vdc - 40Vdc
- Activated current load (High Vol.) 11-25 mA at 24 Vdc
- Acoustic Frequency range 400-2900 Hz
- Maximum acoustic Output 100 dB(A) @ 1m
- Operating temperature range -25°C to +70°C
- Unit weight (inc Back box) 290g
- Max tolerated humidity 95% RH
- Waterproof
- IP Rating: (non condensing) IP65



> **FDCWS100AV** Addressable Module for FDCWS100 and FDCWS100AV sounders

- Power supply voltage range: 18Vdc-40Vdc
- Activated current load:
 - (High Vol. Inc. Sounder):5-8 mA at 24 Vdc
 - (High Vol. Inc. Sounder):Beacon 11-25mA at 24 Vdc
- Operating temperature range: -25°C to +70°C
- Unit weight (inc Back box): 290g
- Max tolerated humidity: 85% RH
- Compatible Sounder Units: FDCWS100 & FDCWS100-AV
- BS EN 54-18:2005: Input/Output devices
- BS EN54-17:2005: Short Circuit Isolators



> **FDSGFI100** Wireless remote indicator

- Remote indicator must be used with sensor in the ceiling or under floor.
- Operating frequency range: 868.15 MHz - 869.85 MHz
- Max radiated power: 5 dBm (3 mW)
- Radio signal's modulation type: FSK
- Operating frequency channels: 7
- Communication range with the translator or the expander: 200 m (in open space)
- Main battery type: CR123A (3 V & 1.2 Ah)
- Secondary battery type: CR123A (3 V & 1.2 Ah)
- Main battery life time: 5 years
- Secondary battery life time: 2 months
- Operating temperature: from 0 to +55 °C
- Max tolerated humidity (no condensing): 95% RH
- Dimensions : 87 mm x 87 mm x 68 mm
- Weight (without batteries:) 180 g

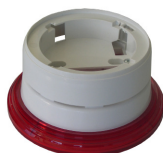


> **FDSGRBS100** Wireless sounde base



- The wireless sounder base is a device that activates its output when ordered so by the control panel in the event of fire alarms. Wireless sounder base is designed to act as a supporting mean for the - installation of wireless detectors.
- Operating frequency range: 868 MHz
- Radiated power: 5 dBm (3 mW)
- Usable operating frequency channels:7
- Radio signal's modulation type: FSK
- Communication range with wire to wireless device or wireless expander device: 200 m in open space
- Main battery type: CR123A (3 V & 1.2 Ah)
- Secondary battery type: CR123A (3 V & 1.2 Ah)
- Main battery life time 5 years
- Secondary battery life time 2 months
- Operating temperature range: from -10 °C to +55 °C
- Maximum tolerated humidity - with no condensing: 95 % RH
- Maximum volume range at 1m -selectable: from 89 dBa to 91 dBa
- Device output tone's frequency range: 440 Hz to 2900 Hz
- Ingress protection rating: IP 21C
- Device's dimensions: 120 mm x 52 mm
- Device's weight: 150 g

> **FDSGRBS100-AV** Wireless sounde base with beacon



- The wireless audiovisual sounder base is a device that activates its output when ordered so by the control panel in the event of fire alarms. Wireless sounder base is designed to act as a supportingO mean for the installation of wireless detectors.
- Operating frequency range: 868.15 MHz - 869.85 MHz
- Radiated power: 5 dBm (3 mW)
- Usable operating frequency channels: 7
- Radio signal's modulation type: FSK
- Communication range with wire to wireless device or wireless expander device: 200 m in open space
- Main battery type: CR123A (3 V & 1.2 Ah)
- Secondary battery type: CR123A (3 V & 1.2 Ah)
- Main battery life time: 5 years
- Secondary battery life time: 2 months
- Operating temperature range: from -10 °C to +55 °C
- Maximum tolerated humidity - with no condensing: 95 % RH
- Maximum volume range at 1m: selectable from 90.1 dBa to 92.4 dBa
- Device output tone's frequency range: 440 Hz to 2900 Hz
- Device's dimensions: 145 mm x x 66 mm
- Device's weight: 260 g

> **FDWTESTER** Wireless survey kit *on request



- The purpose of the Wireless Survey Kit is to determine the quality of the radio signal coming directly form a FDW2W wire to wireless translator or relayed through a FDWE100 wireless expander in a specific spot in the installation site where a wireless device is going to be installed.

The FDWTESTER is composed of the following elements:

- A carrying case
- A pair of carrying case's keys
- A test device
- A test device's adaptor base
- A battery for the test device: CR123A (3 V & 1.2 Ah)
- A radio interface module
- A power supply transformer unit for the radio interface
- A wireless keypad
- An ER9V battery for the wireless keypad (9 V & 1.2 Ah)
- A programming lead for wireless keypad and radio interface connection
- A compact disk containing the wireless system configuration program (Wirelex) for the PC



Multi-function monitoring software

- Integrated monitoring system to control devices:
 - Fire Detection
 - CCTV
 - Burglar alarm
 - Access control
 - BAS Building automation system
- LAN and WAN line management
- Telephone lines: PSTN GSM ISDN
- Dedicated line: RS 232 RS 485 point to point
- Multiprotocol management
- Multimonitor management on each work station with graphic maps and user friendly interface
- Client server system architecture
- Complete control of every single device including remote programming and remote firmware updating
- Hierarchical system scalable by user category
- Advanced event storage and search functions
- Customizable to suit all customer requirements
- Operating environment: Windows

Winwatch versions available

- > **Win Terminal** max 2 devices
- > **Win Super** max 6 devices
- > **Win Max** max 12 devices
- > **Winwach Enterprise** Management of an unlimited number of peripherals

Optional modules for integration

- > **Win client** Management module for 1 additional client work station
- > **Win Mappe** Interactive image-maps management module
- > **Win back up** Module for back up management of the devices connected to GSM data lines



> **FD9002L** Conventional fire alarm panel 2 zone

- Maximum number of fire detectors in a line/zone 32
- Control of the lines and controllable outputs for fault conditions (short circuit and interruption) and automatic reset ;
- Built-in sounder in case of fire – monotonal , continuous with the possibility of exclusion;
- Ability to Disable each of the fire alarm lines ;
- N°1 Independent relay output in case of fire alarm 3A/125V AC, 3A/30V DC
- N°2 Controllable output in case of fire alarm:(19-28)VDC/ 0,5A
- N°1 Independent relay output in case of failure: 3A/125V AC, 3A/30V DC
- Battery 5Ah Power supply 220Vac 65Watt
- Weight 1,25 Kgm

> **FD9004L** Conventional fire alarm panel 4 zone

- Same features of FD9002L but with 4 zones

> **FD9008L** Conventional fire alarm panel 8 zone

- Same features of FD9002L but with 8 zones



> **FD9004** Conventional fire alarm panel 4 zone with LCD display

- Maximum number of fire detectors in a line/zone 32
- Multilingual LCD display 2x16 characters
- Control of the lines and controllable outputs for fault conditions (short circuit and interruption) and automatic reset ;
- Built-in sounder in case of fire – monotonal , continuous with the possibility of exclusion;
- Ability to Disable each of the fire alarm lines ;
- N°1 Independent relay output in case of fire alarm 3A/125V AC, 3A/30V DC
- N°2 Controllable output in case of fire alarm:(19-28)VDC/ 0,5A
- N°1 Independent relay output in case of failure: 3A/125V AC, 3A/30V DC
- Battery 5Ah Power supply 220Vac 65Watt
- Weight 1,3 Kgm

> **FD9008** Conventional fire alarm panel 8 zone with LCD display

- Same features of FD9004 but with 8 zones



> **FD90004R** Expansion 4 relays for conventional fire panel



> **FDW2WC** Wireless conventional module permits ^{*on request}

Wireless conventional module permits to add a wireless sub-system to a conventional fire security installation.

- Power supply voltage range: 9-30V
- Current consumption: 50 mA NORMAL condition at 12 V
- Current consumption: 40 mA FAULT condition at 12 V
- Current consumption: 60 mA ALARM condition at 12 V
- Current consumption: 26 mA NORMAL condition at 24 V
- Current consumption: 21 mA FAULT condition at 24 V
- Current consumption: 31 mA ALARM condition at 24 V
- Communication range between FDW2WC and wireless devices: 200 mt. open space
- Operating frequency range: 868 - 870 MHz
- Radiated power range: 5 dBm equals to 3 mW
- Radio signal's modulation type: FSK
- Dimensions: 190 mm x 230 mm x 50 mm With antennas
- Dimensions: 120 mm x 160 mm x 50 mm Without antennas
- Weight: 330 grams



> **SF100** conventional Smoke detector

Low profile detector to match conventional analogue BS300 base , made of plastic material and with a modern design



- Certificated n. 0832 - CPD - 0125
- Certification : EN54 parts 7
- materials ABS + PC (UL94 - V0)
- 3- color LED
- Power supply 10-30Vdc
- current consumption in standby 90uA @ 24V
- Maximum current consumption in alarm 40mA
- Maximum current consumption 20mA output Remote
- Operating temperature -30 to +70 ° C
- Relative humidity 95 % RH
- IP Rating 40
- Diameter : 110mm ; Height : 54mm ; Weight : 130g (with base)

> **SF200** Conventional multicriterial detector

- Certificated n. 0832 - CPD - 0126
- Certification : EN54 parts 5
- threshold of temperature for alarm 58°C

> **SF400** Conventional Heat detector

- Certificated n. 0832 - CPD - 0127
- Certification : EN54 parts 5 & 7
- slow threshold of temperature for alarm 58°C
- high threshold of temperature for alarm 58°C



> **BSE100** Conventional base

- material: ABS + PC (UL94-V0)
- with 1Kohm resistor
- available with relay for BRL100
- Maximum wire diameter 2.5 mm2
- dimension diameter: 110 mm height: 15 mm



> **BRL100** Relay base for conventional detectors: SF100 - SF200 - SF400



> **SF109** Conventional Smoke detector

Low profile detector to match conventional analogue BSE109 base , made of plastic material and with a modern design .

- Certification : EN54 part 7
- Power supply 10-30Vdc
- current consumption in standby 130uA @ 24V
- Maximum current consumption in alarm 20mA
- Operating temperature 10 to +50 ° C
- Relative humidity 95 % RH
- IP Rating 40
- Diameter : 100mm ; Height : 54mm ; Weight : 100g (with base)

> **SF209** Conventional Heat detector

- Certification : EN54 part 7
- High threshold of temperature for alarm 58°C

> **SF309** Conventional rate of rise detector

- Certification : EN54 part 5
- High threshold of temperature for alarm 58°C



> **SF409** Conventional multicriterial detector

- Certification : EN54 parts 5 & 7
- Threshold of temperature for alarm 58°C



> **BS109** Conventional base for Sfxx9 detectors

- Available with relay for BRL109
- Maximum wire diameter 2.5 mm²
- Dimension diameter: 100 mm height: 15 mm



> **FD4930B** Conventional resettable alarm button

- Two modes of power supply 24 V or 220V
- Low current consumption
- Material: ABS
- One colour: red
- EN54-11 certificate



> **FD4991** Call point resettable

- EN54-11 : 2001 + A1 : 2005
- CPD Certificate
- restorable version with breaking glass effect
- Operating test with key supplied
- Degree of protection IP 66
- Connection Type : 6 terminals (3 double terminals for derivation)
- Maximum contact current 3A
- Operating temperature -20 / + 65 ° C
- Humidity 95 % RH
- 87x87x23 mm
- Weight 320g

> **FD5970** Audio visual fire alarm device EN54 3 and 54 23

The device is an audio/visual warning panel, available in different models and suited for any emergency situation such as fire, flooding, gas leaks, etc., where visual and audio information is needed. Its special design, very pleasant and reduced thickness makes it particularly suited for public places where security is required in addition to elegance.



- Power supply: 18V d.c. - 30V d.c. (Nominal Voltage:24V d.c).
- Absorption: 50mA
- Installation: Wall mount
- Max mounting height for to secure visibility: 4,6m
- Type of connection: Clamp
- Flash light color: White
- Flashing frequency 1Hz
- Sound power (min): 79 dB(A) @ 1m, 18V d.c. (max)92,3 dB(A) @ 1m
- Sound model pulsed, (500ms on, 500ms off)
- Silence-able Buzzer
- Buzzer frequency: 2,8Khz
- Operating temperature: From -10°C to +55°C
- Material: ABS
- Dimensions with backbox: 292x130x55mm (W x H x D)
- Compliant with EN54-23 W-4,6-9,1 and O-4,6-9,1-9,9. Syncro compliant with EN54-3:2001 + A1:2002 + A2:2006
- Protection Class IP21C*



> **FD FI500** Bright indicator LEDs for repeat individual alarm or detector group

- The repeater is connected directly to the LED terminal repeat of the sensor .
- For wall mounting or ceiling
- material ABS
- Consumption : 4.5 mA @ 24 Vdc
- Operating Temperature : -30 ° C / + 70 ° C
- IP Rating : 40
- Dimensions : 80x80x27
- Weight 30g
- Product promoted and available only out of Europe



> **FDRK90** Linear smoke detector for 50 mt coverage reflector included

Linear smoke detector is constituted by an infrared device light transmitter and a receiver located in a single housing and a reflector with ranges up to 50 meters

- Power supply 11 / 30Vcc
- Standby current 18,6mA
- Alarm state current 50mA
- Selectable thresholds: 40%,50%,60% e 70%
- Angle tolerance 0,5°.
- Operating temperature -10° + 55°C.
- Relative Humidity 95% a +40°C
- Dimensions 128 x 79 x 84mm.
- Colour of box: Red and Black.
- Certification VDS EN54-12
- Weight 200g



> **FDRK100** Linear smoke detector for 100 mt coverage reflector included

Linear smoke detector is constituted by an infrared device light transmitter and a receiver located in a single housing and a reflector with ranges up to 50 meters

- Power supply 11 / 30Vcc
- Standby current 18,6mA
- Alarm state current 50mA
- Selectable thresholds: 40%,50%,60% e 70%
- Angle tolerance 0,5°.
- Operating temperature -10° + 55°C.
- Relative Humidity 95% a +40°C
- Dimensions 247 x 146 x 144 mm.
- Colour of box: Red and Black.
- Certification VDS EN54-12
- Weight 900g



> **FDBF100A** Active infrared barrier - Up to 100 Mt

Consisting of transmitter and receiver unit, which allows the detection of smoke in large space. Available FDBR100 module that allows connection of No. 4 FDBF100A barriers and remote signal

- Plastic Container
- Power supply : 12 / 24Vdc
- Current consumption at rest of 72 / 92mA
- Current consumption in alarm 76 / 101mA
- Range 5 to 100 meters
- Coverage: 1500 square meters
- Alarm output activated on 4 different levels
- self calibration
- Fault output
- 3 LED status display
- Operating temperature : 5C ° -40C °
- Dimensions : 96x159x211
- Weight 1500g
- CPD Certification

> **FDBFTEST** Dimmer for the calibration and testing of barriers FDBF100A / R



> FD 1450 Anti flooding detector in thermoplastic material

*on request

The presence of water is detected through 4 support gilt feet . The alarm is activation by relay . It is available Item FD1450S that connects to the FD 1450 which serves as a probe .

- In parallel , you can connect up to 10 FD 1450s
- 3 relay outputs
- Operating Temperature : + 5C ° to + 50C °
- Operating voltage: 12 / 24Vdc
- Maximum consumption : 30mA
- IP Rating 40
- Weight 160g

> FD 2450 Anti flooding detector IP 67 * on request

*on demand

Sensor for detecting the presence of water through 2 gold pins . The alarm is via a relay activation .



- It is able to detect the presence of liquid with a variable height from 0 to 11 mm
- Equipped with wire 4m
- IP Rating : 67
- N ° 7 -wire connection cable 4m
- Operating Temperature : -15C ° + 70C °
- Operating voltage 12 / 24Vdc
- Maximum consumption : 32 mA
- Resting consumption 13 mA
- Weight : 790g



> FD5200 Fire extinguishing control panel with 1 zone



- POWER SUPPLY
 - Voltage 220/230 V
 - Backup batteries : 2x12V / 12 Ah
- 3 FIRE ALARM LINES (one without control fire extinguishing, two with control fire ex-tinguishing)
 - Maximum number of fire detectors in a line: 32
 - Connecting line: two-wire
- 5 MONITORATED Input
- 3 MONITORATED OUTPUTS
- 4 RELAY OUTPUTS: 3 FOR FAULT CONDITIONS and ONE FOR ALARM CONDI-TION
- 3 open collector
- Light indication: LEDs
- Backlit LCD display
- Built-in sounder
- CONSUMPTION ON BACKUP BATTERIES SUPPLY IN DUTY MODE AT 24 V
 - Minimum configuration: <155 mA
 - Maximum configuration: <400 mA
- POWER SUPPLY TO EXTERNAL DEVICES
 - Maximum current value (current of controllable outputs included): 1,5 A
- WEIGHT (BACKUP BATTERIES NOT INCLUDED): 6,6 kg
- DIMENSIONS: 450 x 355 x 115mm
- OPERATING TEMPERATURE: -5 oC to +40 oC
- RELATIVE HUMIDITY: to 93 %
- DEGREE OF PROTECTION: IP 40
- ACCESS LEVELS TO CONTROL FUNCTIONS: 4 (in compliance with EN 54/2)

> FD5301 Remote repeater for FD5200



The module is designed to operate together with Fire Extinguishing Control Panel FD5200E. The device allows remote access on a part of the panel controlling components and indicators, related with the extinguishing process.

The remotely controlled panel basic functions are:

- Manual activation of Extinguishing
- Selecting the Control Panel Modes of operation: Manual/Auto mode or only Manual mode(duplex controlled)
- Disable Extinguishing(duplex controlled)
- Hold Extinguishing(duplex controlled)

- Power Supply: 28 V DC
- Indication: LED
- Dimension: (313x218x85) mm
- Weight: 1,125 kg
- Operating temperature -5 oC to +40 oC
- Relative humidity: to 93 %



> **FD 1050 Y** CONVENTIONAL YELLOW CALL POINT

Call point for manual activation of fire extinguishing

- Power supply: 10-30 Vcc
- Dimensions :90x90x44mm
- Weight: 200g
- Material: ABS
- Operating temperature: -10 gr. C +55 gr. C
- Relative humidity: (9333)%
- IP40
- Certification EN54-11



> **FD 1050 G** CONVENTIONAL BLUE CALL POINT

Emergency call point to stop fire extinguishing

- Power supply 10-30 Vcc
- Dimensions : 90x90x44mm
- Weight: 200g
- Material ABS
- Operating temperature: -10 gr. C +55 gr. C
- Relative humidity: (9333)%
- IP40
- Certification EN54-11



> **FD 1050 B** CONVENTIONAL GREEN CALL POINT

Call point for delay fire extinguishing

- Power supply: 10-30 Vcc
- Dimensions: 90x90x44mm
- Weight: 200g
- Material ABS
- Operating temperature: -10 gr. C +55 gr. C
- Relative humidity: (9333)%
- IP40
- Certification EN54-11



Atex Conventional detector from Apollo series Orbis

Orbis IS is a range of conventional detectors which have been developed from the Orbis smoke and heat detectors. Orbis is a range with modern styling and is electronically compatible with Apollo Series 60 IntrinsicallySafe conventional detectors.

- > **ORB-OP-52027** Orbis IS optical smoke detector
- > **ORB-OH-53027** - Orbis IS multisensor detector
- > **ORB-HT-51151** - Orbis IS fixed temperature detector
- > **ORB-HT-51145** - Orbis IS temovelocimetric detector
- > **ORB-MB-50018** - Orbis IS timesaver base
- > **55100-033** - Conventional Orbis is call point waterproof
- > **55100-031** - Conventional Orbis is call point
- > **29600-378** - Conventional galvanic barrier

> **FD312TB** Acoustic siren in explosion proof



- Aluminum body and cover without copper
- Screws in AISI 304
- An entrance hole Ø 2 "ISO 7/1"
- explosion proof protection rating:
 - II 2GD Ex d IIC T6 Gb
 - II 2GD Ex tb IIIC T85 ° C Db
- protection rating : IP65
- Power supply: 12²24 Vac/Vcc
- Power: 4 W
- Measure Range: 102 Db
- Acoustic frequency: 340² 2000 Hz
- Service: continuous
- Weight: Kg. 1,5
- Operating temperature: - 20 °C² + 55 °C

> **FD320B** Acoustic siren in explosion proof Class 1



- Aluminum body and cover without copper
- Screws in AISI 304
- An entrance hole Ø 2 "ISO 7/1"
- explosion proof protection rating:
 - II 2 G Ex dIIC or IIB+H2 T3 or T4 Gb
 - II 2 D Ex tb III T150°C or T130° Db
- protection rating : IP66
- Power supply: 12²24 Vac/Vcc
- Power: 16 W
- Measure Range: 110 Db
- Acoustic frequency: 440² 2000 Hz
- Service: continuous
- Weight: Kg. 3,7
- Operating temperature: - 50 °C² + 60 °C



> **FD312TB** Small optical signal in explosion proof class 1

- Threaded inlet Ø 2"ISO 7/1 - NPT - M25X1,5
- Protective cage in AISI 304 (optional)
- Explosion proof protection:
 - II 2 G Ex d IIC T6
 - II 2 D Ex tD A21 IP 65 T85°C
- IP rating: IP65
- Power supply: 12/24 Vac/Vcc
- Power: 3 W
- Lamp power: 6 J
- Intermittence: 75 cycles per minute
- Operating temperature: -20° + 40°C"
- Weight: 1,6 Kg



> **FDRK60BEX** Explosion proof optical beam smoke detector tx and rx

Transmitter

- Consumption: 1mA
- infrared source: diode solid state

Receiver

- Consumption: 10 mA
- output OC - open collector - Fault
- the pre-alarm output relay: 1A / 24V
- the alarm output relay: 1A / 24V
- Power: 12VDC or 24VDC (+ 15-10%)
- maximum range: 100 m (mod. FD60BEX)
- adjustability: +/- 10 ° in all directions
- containers: light alloy
- dimensions: 230x230x190



Atex XP95 detector from Apollo

XP95 Intrinsically Safe (IS) detectors are a development of the well-established analogue addressable XP95 range from Apollo. XP95 IS detectors feature all the benefits of the standard range, but are developed specifically for use in hazardous areas. The addresses of XP95 IS detectors are set by means of the patented XPERT card.



> **55000-640** XP95 IS Optical smoke detector



> **55000-440** XP95 IS Heat detector



> **45681-215** XP95 IS mounting base



> **55100-940** XP95 IS Manual call point

> **29600-098** Galvanic barrier



> **55000-855** XP95 IS single channel protocol translator



> **55000-856** XP95 IS double channel protocol translator

> **55000-849APO** Output module with isolator



> **55000-812APO** DIN-Rail Zone Monitor with Isolator





> **FDASDO** ASD smoke detector up to 70mt

Asd smoke detector up to 70mt with 40mt max distance for the latest hole

- Resolution of the measure 0,001%_m
- Alarm signal between 0,02-10%/_m
- Relè out2 (alarm and fault)
- Certified EN 54 part 20 A class 6 hole, B 8 and C 12
- IP rating 65
- Power consumption 75mA
- 195x140x290 mm



> **FDASD1** ASD smoke detector up to 120mt

Asd smoke detector up to 120mt with 70mt max distance for the latest hole

- Resolution of the measure 0,001%_m
- Alarm signal between 0,02-10%/_m
- Relè out 3 (alarm , fault, programmable)
- Certified EN 54 part 20 A class 8 hole, B 12 and C 16
- IP rating 65
- Power consumption 165mA
- 355x215x160 mm



> **FDASD31** ASD smoke detector up to 300mt

Asd smoke detector up to 300 mt with 120 mt max distance for the latest hole

- Resolution of the measure 0,001%_m
- Alarm signal between 0,02-10%/_m
- Relè out 3 (alarm , fault, programmable)
- Certified EN 54 part 20 A class 16 hole, B 56 and C 120
- IP rating 65
- Power consumption 260mA
- 415x285x175 mm



> **FDASD32** ASD smoke detector up to 2x 300mt

Asd smoke detector with 2 sensor, up to 2x300 mt with 2x120 mt max distance for the latest hole

- Resolution of the measure 0,001%_m
- Alarm signal between 0,02-10%/_m
- Relè out 5 (2 alarm , fault, 2 programmable)
- Certified EN 54 part 20 A class 2x16 hole, B 2x56 and C 2x120
- IP rating 65
- Power consumption 290mA
- 415x285x175 mm



> **FD10900P** Sampling pipe
 Red ABS pipe for aspirating detector, 3mt long, 25 mm section



> **FD10905** Red ABS 45°curve for sampling pipe



> **FD10906** Red ABS 90°curve for sampling pipe



> **FD10908** ABS joint sleeve forFD10900 pipe



> **FD10909** T joint for ABS FD10900 pipe



> **FD10927** Pipe plug



> **FD10915** ABS opening joint sleeve for FD10900 pipe to facilitate maintenance



> **FD21888K074** Sampling point made up of flexible hose with aspirating point

> **FD21888K076P** Flexible connector to overcome obstacles length 1 mt

> **FD10950P** ABS Cement 250ml for ASD system



> **FD10954P** Fastening clip for FD10900 pipe

> **FD21888K078P** Flexible tube 100m diam. 10mm



> **FDAPDL** Distance locator module for thermal cable

The module can be use with any addressable system or Conventional, easy to configure and Install . You can visualize on LCD , the distance (feet and meters) from point of overheating , along the sensing cable (max 3000m). In case of loss power the installation settings remain save.

- Voltage 24VDC
- Standby current <10mA @ 24VDC
- Alarm current <90mA @24VDC
- Operating Temperature: 32°F - 120°F (0°C - 49°C)
- Dimensions (W x H x D): 7" x 5.125" x 3" (177.8mm x 127mm x 76.2mm)
- Weight: 1 lb. (0.45kg)

> **TCXXX** Heat Detector Cable



The heat sensing cables , use advanced polymers and a new alloy developed to provide exceptional detection performance , durability and flexibility . These polymers are chemically designed to melt at the specific temperatures, allowing the braided conductors to make contact and to initiate an alarm.

Max voltage rating 42VDC
 Resistance 164Ohms/m
 Diameter 3,2mm
 Band radius 76,2mm
 Weight 6,8Kg/305m

Temperatura	PVC Coated	Polypropylene sopra PVC	Nylon Sopra PVC
68°	TC155	TC155P	TC155N
78°	TC172	TC172P	TC172N
88°	TC190	TC190P	TC190N
105°	TC220	TC220P	TC220N



> G555XXX Gas detectors IP55



The gas detectors of this type are constituted by electronics able to control different types of sensitive elements, as a function of the different types of gas to be monitored.

Available outputs are:

Prealarm output open collector NPN opto-isolated;

alarm output open collector NPN opto-isolated ;

Fault output NPN open collector N.C. to ground

Optional absorption Output (prealarm 2700 ohms, 1200 ohms to ground alarm). The latter settable as addressed output with three thresholds from compatible stations.

Thresholds are configurable from PC in percentages L.I.E. or p.p.m. or percentage of the volume in relation to the gas to be detected. With the PC connected to the sensor in addition to setting address, thresholds, filters and delays, you can view and verify the sensitive element real reading, and simulate the pre-alarm conditions, alarm and fault.

The detectors are equipped with semiconductor head. The average head life is 3 years in favorable environments with no polluting agents, after which it will be replaced by an economic operation by authorized personnel. All detectors are available with loop interface or relay interface

- Power supply 12/24 Vdc
- Standby current 55 mA at 12 Vdc and 28 mA at 24 Vdc
- Consumption in preal . 68 mA at 12 Vdc and 35 mA at 24 Vdc
- Alarm current 80 mA at 12 Vdc and 45 mA at 24 Vdc
- Standard setting 15 % 30 % L.I.E.
- Operating temperature. from 0 ° C to + 40 ° C
- Relative humidity 90 %
- Maximum air speed 10 m / sec
- Housing: metal dust ADFT
- Weight : 370 g
- Dimensions HxWxD (mm) 141x100x60

GAS Detectors

Gas	4-20 mA module	3 Relays (Alarm, Pre-alarm and fault)	Direct connection loop Teledata	Pre-set Pre-alarm/Alarm thresholds	Sensitive element
Methane	G5550042	G55500RL	G55500LV	Standard setting 15% 30% L.I.E.	Semiconductor
Special gases	G5550142	G55501RL	G55501LV	Standard setting 15% 30% L.I.E.	Semiconductor
Petrol fumes	G5550242	G55502RL	G55502LV	Standard setting 15% 30% L.I.E.	Semiconductor
wCarbon monoxide	G5550342	G55503RL	G55503LV	Standard 100PPM 200PPM calibration	Catalytic
Hydrogen gas	G5550442	G55504RL	G55504LV	Standard setting 15% 30% L.I.E.	Semiconductor
GPL	G5550542	G55505RL	G55505LV	Standard setting 15% 30% L.I.E.	Semiconductor
Propane	G5550642	G55506RL	G55506LV	Standard setting 15% 30% L.I.E.	Semiconductor
Ammonia 100/200 ppm in conteniner	G5550742	G55507RL	G55507LV	Standard 100PPM 200PPM calibration	Semiconductor
Ammoniac 1000/2000 ppm ppm in conteniner	G5550842	G55508RL	G55508LV	Standard 100PPM 200PPM calibration	Semiconductor
Acetylene gase	G5550942	G55509RL	G55509LV	Standard setting 15% 30% L.I.E.	Catalytic
Oxigen excessive	G5551042	G55510RL	G55510LV	standard setting Default = 24% 27%	electrochemical cell
Oxigen insufficient	G5551142	G55511RL	G55511LV	standard setting Default = 18% 15%	electrochemical cell

> E555XXXX Gas Detectors Atex

Gas	4-20 mA module	3 Relays (Alarm, Pre- alarm and fault)	Direct connection loop Teledata	Pre-set Pre-alarm/ Alarm thresholds	Sensitive element
Methane	E5550042	E55500RL	E55500LV	Standard setting 15% 30% L.I.E.	Semiconductor
Special gases	E5550142	E55501RL	E55501LV	Standard setting 15% 30% L.I.E.	Semiconductor
Petrol fumes	E5550242	E55502RL	E55502LV	Standard setting 15% 30% L.I.E.	Semiconductor
Carbon mo-noxide	E5550342	E55503RL	E55503LV	Standard 1000PPM 2000PPM calibration	Catalytic
Hydrogen gas	E5550442	E55504RL	E55504LV	Standard setting 15% 30% L.I.E.	Semiconductor
GPL	E5550542	E55505RL	E55505LV	Standard setting 15% 30% L.I.E.	Semiconductor
Propane	E5550642	E55506RL	E55506LV	Standard setting 15% 30% L.I.E.	Semiconductor
Ammonia 100/200 ppm in conteniner	E5550742	E55507RL	E55507LV	Standard 1000PPM 2000PPM calibration	Semiconductor
Ammoniaca 1000/2000 ppm ppm in conteni-ner	E5550842	E55508RL	E55508LV	Standard 1000PPM 2000PPM calibration	Semiconductor
Acetylene gase	E5550942	E55509RL	E55509LV	Standard setting 15% 30% L.I.E.	Catalytic
Oxigen excessive	E5551042	E55510RL	E55510LV	standard setting Default = 24% 27%	electrochemical cell
Oxigen insuffi-cient	E5551142	E55511RL	E55511LV	standard setting Default = 18% 15%	electrochemical cell

Accessories for gas detectors

- > **FD55105** Beaker for G series gas detectors
- > **FD55106** Beaker for E series gas detectors
- > **FDB550XX** Test cylinder for GAS detectors



> **FDCE408P** Gas detection panel 8 detector



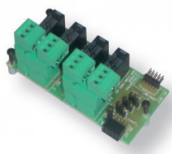
> **FDCE424P** Gas detection panel 8 detector expandable to 24



> **FDES404** Expansion 4 zone for FDCE424P



> **FDCE380** Gas detection panel up to 200 detectors



> **FDES380** Expansion 8 zone for FDCE700



> **FDCE380** Expansion 4 output relè for FDCE700

> **TSXXX - SExXX** Gas Detectors - Pro series

Gas detector series PRO introduces the excellence in the field of the gas detection with the range of the products here represented, with some performances and a way of management unique on their category. Two keys F1 and F2 on each instrument allow the normal service operation. The instrument service is independent from software or any external device avoiding possible difficulties due to the fast product technology evolution. Each new gas detector is manufactured with the possibility of replacing the cartridge sensor on site.

Serie IP 66

- IP Rating: IP65
- No. 3 Alarm relays. MAX resistive load 24V/1A SPST
- No. 1 Fault relay. MAX resistive load 24V/1A SPST
- Alarm levels (relays) programmables via DIP-Switch
- No. 1 linear 4²20 mA current output
- No. 5 LED shows the working conditions (red: alarms; green: normal; yellow: fault)
- Terminals plug-in polarized type



Serie Atex

- Ex marking : II 2G Ex d IIC T6 Gb
- No. 3 Alarm relays solid state type. MAX resistive load 24V/1A SPST
 - No. 1 Fault relay solid state type. MAX resistive load 24V/1A SPST
 - Alarm levels (relays) programmables via DIP-Switch
 - No. 1 linear 4²20 mA current output
 - Terminals plug-in polarized type



Detectors: Electrochemical (Serie E), Catalytic (Serie K), Pellistor (Serie P)

Gas type	Risk	Detector Codes			
		IP65		ATEX	
		4-20 mA	Relè	4-20mA	Relé
Inflammable gas	flammable			TS293PXH	SE138PXH
Ethyl acetate - C2H2	flammable			TS293PE	SE138PE
Acetone - C3H6O	flammable	TS292PX	SE137PX	TS293PX	SE138PX
Hydrogen cyanide - HCN		TS220EHCN	SE137EHCN	TS293EHCN	SE138EHCN
Hydrogen cyanide - HCN	flammable			TS293PXH	SE138PXH
iso-Butyl alcohol - C3H8O	flammable	TS220EHCL	SE137EHCL	TS293EHCL	SE138EHCL
Ammonia - NH3	flammable	TS292PX	SE137PX	S293PX TS293PXH	SE138PX SE138PXH
Ammonia - NH3	toxic	TS292PX	SE137PX	TS293PX TS293PXH	SE138PX SE138PXH
Ammonia High features - NH3	toxic	TS220EA	SE137EA	TS293EA	SE138EA
Carbon dioxide - CO2	toxic	TS220EAH	SE137EAH	TS293EAH	SE138EAH
	toxic	TS220IC2 TS220IC2H			
Petrol	flammable	TS220ES	SE137ES	TS293ES	SE138ES
	toxic	TS292KB TS292PB	SE137KB SE137PB	TS293KB TS293PB TS293PXH	SE138KB SE138PB SE138PXH
Clorine - CL	toxic	TS220EN2	SE137EN2	TS293EN2	SE138EN2
Heptane - C7H16	flammable	TS220ECL	SE137ECL	TS293ECL	SE138ECL
Exane - C6H14	flammable	TS292PX	SE137PX	TS293PX TS293PXH	SE138PX SE138PXH
Ethane - C2H6	flammable	TS292PX	SE137PX	TS293PX TS293PXH	SE138PX SE138PXH
Ethylene - C2H6	flammable	TS292PX	SE137PX	TS293PX TS293PXH	SE138PX SE138PXH
Gpl	flammable	TS292PX	SE137PX	TS293PX TS293PXH	SE138PX SE138PXH
		TS292KG TS292PG	SE137KG SE137PG	TS293KG TS293PG TS293PXH	SE138KG SE138PG SE138PXH
Hydrogen - H2	flammable				
Hydrogen sulphide - H2S	flammable	TS292KI TS292PI	SE137KI SE137PI	TS293KI TS293PI TS293PXH	SE138KI SE138PI SE138PXH
Hydrogen sulphide - H2S	flammable			TS293PXH	SE138PXH
Methane - CH4	flammable	TS220EH	SE137EH	TS293EH	SE138EH
		TS292KM TS292PM	SE137KM SE137PM	TS293KM TS293PM TS293PXH	SE138KM SE138PM SE138PXH
Methyl alcohol - CH4O	flammable				
Carbon monoxide - CO	flammable	TS292PX	SE137PX	TS293PX TS293PXH	SE138PX SE138PXH
Carbon monoxide - CO	toxic			TS293PXH	SE138PXH
Carbon monoxide - CO	toxic	TS220ECS	SE137ECS	TS293ECS	SE138ECS
Carbon monoxide - CO and pet-rol	flammable and to-xic	TS220ECH	SE137ECH	TS293ECH	SE138ECH
Oxigen - O2	asphyxia	TS255CB			
Octane-n - C8H18	flammable	TS255CN2			
Pentane - C5H12	flammable	TS220EO	SE137EO	TS293EO	SE138EO
				TS293PX TS293PXH	TS293PX TS293PXH
Propane - C3H8	flammable	TS292PX	SE137PX	TS293PX TS293PXH	SE138PX SE138PXH
				TS293PX TS293PXH	SE138PX SE138PXH
Styrene - C8H8	flammable	TS292PX	SE137PX	TS293PX TS293PXH	SE138PX SE138PXH
				TS293PX TS293PXH	SE138PX SE138PXH
Toluene - C7H8	flammable	TS292PX	SE137PX	TS293PX TS293PXH	SE138PX SE138PXH
				TS293PS	SE138PS
Stirene - C8H8	Infiammabilità			TS293PS	SE138PS
				TS293PX TS293PXH	SE138PX SE138PXH
Toluene (Toluolo) - C7H8	Infiammabilità	TS292PX	SE137PX	TS293PX TS293PXH	SE138PX SE138PXH



> FDFL45 Flame Detectors IR + UV

- supply voltage: 12 or 24 VDC
- current: 100 mA
- maximum detection distance: 25m (referred to hydrocarbons)
- target flame - height 20 cm - tray 33x33x5 cm)
- viewing angle: 120 °
- sensitivity adjustment: channel IR and UV-independent
- adjustable time delay: 5-10-20-30sec with dip-switch
- analog output: 0-5V
- OC output (Open Collector) Alarm
- OC output (Open Collector) Fault
- relay output: 0.5 A/24Vcc - full exchange
- LEDs: Alarm, Fault, IR and UV (active)
- plastic enclosure
- protection: IP65
- electromagnetic immunity: conforms to standards EN50130
- dimensions: FLV45=142x82x54 FLV45A=142x82x148
- weights: FLV45=350gr

> FDFL50 Flame Detectors IR + UV ATEX enclosure

Electrical Data

- power supply : 11 - 30 Vdc
- power consumption : 180 mA max

Features

- detector's class : 1 (maximum flame detection distance : 25 m, target flame : 33x33 cm - height 5 cm)
- optical angular viewing range : 120 degrees
- spectral response IR : 0.8-2.8 and 4.2-4.8 micron
- spectral response UV : 185-260nm
- working temperature : -25 + 75°C
- relative humidity : 0 - 100% RH non condensing
- regulation of internal sensitivity (IR : 4 levels, UV : 4 levels)
- EMC immunity : according to standard EN50130-4

Outputs

- alarm relay output: 1 A/ 24 Vdc
- fault output: 1 A/ 24 Vdc
- analog output: 0-5V
- analog output: 4-20mA (optional)
- RS485 serial port (optional)

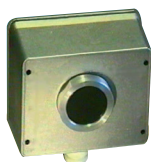
Mechanical Data

- enclosure : Aluminium light alloy
- execution : explosion proof - Ex-d IIC T6
- certification : ATEX - CESI 11ATEX019X
- cable exit hole: 1/2" gas - UNI - NPT - ASME B1.20.1
- protection index : IP65 (IEC 529-144)
- dimensions of enclosure+bracket : 130x185 mm
- weight : 3 Kg



> **FD EV 395 Spark detector IP 65** *on request

The spark detector FD EV395 is an electronic device suitable for the detection of sparks in tubes or pipelines of fuel. FD EV395 is able to adjust the sensitivity and the relay activation time . With a test button is also possible a test of remote operation.



- Power supply : 24 V DC and AC
- Current consumption : 20mA (50mA in alarm)
- Viewing Angle solid optical : 90 degrees
- Max Sensing Distance : 50cm
- Output relays : 6A / 24V
- relay Attraction Time : 1-10 sec
- LED indicator alarm
- IP Rating : IP65
- Dimensions : 140x135x85
- Weight : 700g

> **FD SCL 01 Spark detector IP 65 Atex Version** *on request

The FD SCL-01 is a spark detector, controlled by microprocessor, suitable to the detection of sparks into pipeline for fuel. FD SCL 01 provides the possibility to adjust the sensitivity and the relay activation time. It is also possible, by connecting it to a apposite button, a test of remote operation.



- Power supply : 12/24 Vcc
- Power consumption : 20mA (50mA in alarm)
- Optical solid angle of viewing : 90 degrees
- Max Sensing Distance : 50cm
- Output relays : 6A / 24V
- relay Attraction Time : 1-10 sec
- LED indicator alarm
- Device is explosion proof EX - d IIC - T6 - ATEX certified .
- IP66
- Certifications : CESI and ATEX
- Dimensions : 200x130 mm
- Weight : 2000g

> **FD EV-521 Control unit for 2 spark detectors**

Unit for detectors spark to use with proper detectors , it can drive 1 or 2 solenoid valves for nozzles to spray water for extinguishing sparks . Also it is able to command appropriate acoustic signals, it is able to activate automatic fire dampers and manage the monitoring of these



- Power consumption : 5VA
- Timers : 2 adjustable
- Remote test button for 2 spark detectors
- Output relay : 4 (2 programmable)
- Led indicator , activated solenoid valve 1 and 2
- Led indicator of pressure control 1 and 2
- Reset button of memories
- Protection: IP 54
- Dimensions : 213x180x107 mm



> **FD5216** Fire alarm bell for indoor use

- Steel cover 6 ices red
- Power supply and consumption 24 Vcc 25 mA 20*28 Vcc
- Acoustic pressure 93/95 dB
- Dimensions 152 mm x 60 mm
- Weight 0,85 Kg
- Working temperature -10°C a +50°C
- IP rating IP42



> **FD5060** Low Profile Loop Powered Sounder Base

- Compliant to EN54-3
- Low current as low as 0.8 mA
- World's slimmest Sounder Base
- Powered from the loop
- Individually controlled
- Does not consume any address
- Up to 240 Sounder Base Sensor on a single loop



> **SF105B** Conventional device for acoustic alarm .

For environments with excessive noise is designed to give a voice warning .

- Two modes of power supply 24 V or 220V
- Low current consumption
- Material: ABS
- One colour: red



> **FD5405** Electronic Siren with 32 settable tones
with the second tone for two stage alarms

Settable volume. The siren is made of red thermoplastic material.

- Power supply 9 to 28 VDC
- Current consumption 32mA
- Sound output @ 1m: 102dB
- IP Version 54
- -25 / + 70 ° C operating temperature
- Dimensions: 210 x 255 x 63 mm
- Weight: 240g



> **FDSB112F** Conventional indor flash siren with xeno -light

Piezoelectric siren fire with flashing. It has two LED flash and a status LED. The siren is made of ABS.

- Power supply 12-30V
- Current consumption 90mA
- Sound output at 1 m: 96 dB
- Reporting frequency: 3.2 - 3.8 kHz
- signaling Modulation: 3 Hz
- IP: 54
- Operating temperature -40 / 85 ° C
- Dimensions 270 x 180 x 85 mm
- Weight 1500g



> **FDF24** Fire siren by outdoor equipped with power supply **su richiesta*

Fire siren by outdoor with led flash and equipped with power supply reducer to 12V for battery charging . FDF24 Is able to do a permanent test, thanks to OUT PUT TEST. The device is made of red ABS.

- Power supply : 24 Vdc
- Buffer battery : 12Vdc 2,1 Ah Pb
- Max. Charge : 0.5 A
- Sound output at 1 m : 102 db
- Frequency : 1000Hz / 1700Hz
- Fault : Red LED and output " OUT test"
- Degree of protection: IP33C
- Operating temperature : -25 + 70C °
- Dimensions : 322x215x105 mm
- Weight : 2370 gr .
- Certificate of Conformity : 0051 - CPD - 0157
- Standard: EN45-3 : 2000 + A1 : 2002
- Notified by IMQ



> **FDM5411E** HOLD OPEN ELECTROMAGNET holding force 50Km



- Body in ABS with galvanized steel base
- Nickel plated magnet block
- See dimension at the bottom of the page
- Operating voltage: 24 Vdc - Absorbed current: 70 mA
- Fixed Holding force: > 55 Kg. (on request reduced force to 20 Kg. - LF version,
- Residual anti-magnetism pin on the electromagnet body
- Connector with anti-disturb varistor
- With push button release
- Swinging Armature plate for electromagnets series 180, 190
- Base in galvanized steel
- See dimensions at page 55
- Armature plate diameter (mm): 55

> **FDM5411F** HOLD OPEN ELECTROMAGNET holding force 50Km
and aluminium body



- Body in anodized aluminium with base in galvanized steel
- Nickel plated magnet block
- See dimensions at the bottom of the page
- Operating voltage: 24 Vdc - Absorbed current: 70 mA
- Fixed Holding force: > 55 Kg. (on request reduced force to 20 Kg. - LF version
- Residual anti-magnetism pin on the electromagnet body
- Connector with anti-disturb varistor
- Swinging Armature plate for electromagnets series 180, 190
- Base in galvanized steel
- See dimensions at page 55
- Armature plate diameter (mm): 55

> **FDM9412E** HOLD OPEN ELECTROMAGNET holding force
140Kmand body aluminium



- Box in black painted steel
- See dimensions at the bottom of the page
- Operating voltage: 24 Vdc / Absorbed current: 70 mA
- Holding force: > 140 Kg.
- Residual anti-magnetism pin on the electromagnet body
- Connector with anti-disturb varistor
- Provided without Armature plate (to be ordered separately - see page 54)
- With push button release
- Swinging Armature plate for electromagnets series 181
- Base in galvanized steel
- See dimensions at page 55
- Armature plate diameter (mm): 70



> **TD4027B** Power unit certified EN54 4 1,5A 24V

- Certified to EN54-4 (A2) EN12101-10
- Type: Switching 230/240V- 24V/1A 50 Hz
- Short circuit, overload, over voltage protection
- Maximal current deliverable to external units: 1.5A
- N°2 Alarm signals
- Optical LED indication of: 230 Vac power supply presence, low battery, battery absence, low battery charger circuit
- In metal cabinet with housing for n° 2 accumulators 4Ah
- IP30
- Working temperature -5C°/+40C
- Dimensions: 220x300x175



> **TD6027B** Power unit certified EN54 4 2,5A 24V

- Certified to EN54-4 (A2) EN12101-10
- Type: Switching 230/240V- 24V/1A 50 Hz
- Short circuit, overload, over voltage protection
- Maximal current deliverable to external units: 2.5A
- N°2 Alarm signals
- Optical LED indication of: 230 Vac power supply presence, low battery, battery absence, low battery charger circuit
- In metal cabinet with housing for n° 2 accumulators 7Ah
- IP30
- Working temperature -5C°/+40C
- Dimensions: 220x300x175



> **TD15027B** Power unit certified EN54 4 4,5A 24V

- Certified to EN54-4 (A2) EN12101-10
- Type: Switching 230/240V- 24V/1A 50 Hz
- Short circuit, overload, over voltage protection
- Maximal current deliverable to external units: 4.5A
- N°2 Alarm signals
- Optical LED indication of: 230 Vac power supply presence, low battery, battery absence, low battery charger circuit
- In metal cabinet with housing for n° 2 accumulators 17Ah
- IP30
- Working temperature -5C°/+40C
- Dimensions: 220x300x175



> **S-150-27**

- Switching type: 230V/27,6V-5.6A 50Hz
- DC Adjustment +-10%
- Protection against: short Circuit, overload, power surge
- Dimensions: 199x50x110
- Weight: Kg. 0,8
- Standard: CEI EN 60950- CEI 79/2



> **FD200001** Detector removal tool

The universal detector removal tool is designed to suit the majority of smoke, CO and heat detectors for removal, inspection and replacement. This makes it ideal for the removal of detectors installed in sloping ceilings. The detector removal tool is to be used in conjunction with a telescopic access pole, It allows to reach the seats detectors up to 9m in height .



> **FD330001** Smoke detector tester

The smoke dispenser allows simulated smoke (sold separately) to be introduced to a detector sensing chamber in a safe and effective manner. Suitable for the majority of detectors , the smoke dispenser has a test cup that provides a clear view of the detector LED, and its spring loaded mechanism helps to conserve the aerosol and minimise waste. To test smoke detectors installed at a height, the smoke dispenser can be used with a Solo telescopic access pole.

- Dispenser and patented diaphragm contain particles- conserves test gas / smoke
- Spring-loaded mechanism
- Universal use for detector up to 100mm/4" in diameter
- Designed for use at height and at angles
- UL Listed

Telescopic Access Poles



> **FD100001** 4.5 m Telescopic Pole



> **FD108001** 2.5 m Telescopic Pole

> **FD101001** 1.13 m Extension Pole

Access poles are required for detectors out of normal reach. Their use saves the time, cost, disruption and risk to safety that ladders, scaffolding or access gear represents. The extension access poles are extremely lightweight and quickly extend to provide access to detectors up to 9 metres.

- Designed certified non-conductive
- Material: Pull-wound glass fibre
- Simple locking mechanism
- Available in one, two or four telescopic sections

> **FDA3001** Containing aerosol spray for smoke detectors testing .



- UL & ULC listed
- Non-flammable
- Fast activation
- No lasting residue
- Oil-free formulation

> **Cavo 32102** Red twisted grade 4 shielded fire-proof cable diameter 2 x 1 mm

- 30 min fire resistant

> **Cavo 32152** Red twisted grade 4 shielded fire-proof cable diameter 2 x 1,50 mm

- 30 min fire resistant

> **Bat1201** Rechargeable lead batteries 12Vdc 1,22 Ah 97L x 43P x 51A mm

> **Bat1202** Rechargeable lead batteries 12Vdc 2 Ah 178L x 35P x 61A mm

> **Bat1207** Rechargeable lead batteries 12Vdc 7 Ah 151L x 65P x 94A mm

> **Bat1212** Rechargeable lead batteries 12Vdc 12 Ah 151L x 99P x 95A mm

> **Bat1217** Rechargeable lead batteries 12Vdc 17 Ah 181L x 76P x 167A mm

> **Bat1225** Rechargeable lead batteries 12Vdc 25 Ah 166L x 175P x 125A mm

> **Bat1240** Rechargeable lead batteries 12Vdc 40 Ah 197L x 165P x 170A mm



www.teledata-i.com

